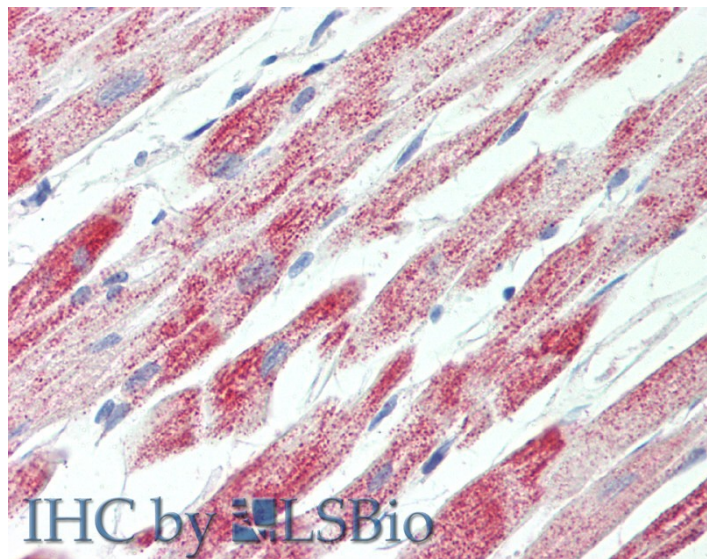


GOAT ANTI-ATP5C1 ANTIBODY

SKU: EB12461



SPECIFICATIONS

| | |
|-----------------------------|--|
| Formulation | Supplied at 0.5 mg/ml in Tris saline, 0.02% sodium azide, pH7.3 with 0.5% bovine serum albumin. |
| Unit Size | 100 µg |
| Storage Instructions | Aliquot and store at -20°C. Minimize freezing and thawing. |
| Synonym / Alias | ATP5C1 ATP synthase, H ⁺ transporting, mitochondrial F1 complex, gamma polypeptide 1 ATP5C ATP5CL1 ATP synthase gamma chain, mitochondrial ATP synthase subunit gamma, mitochondrial F-ATPase gamma subunit mitochondrial ATP synthase, gamma subunit 1 |
| Accession ID | NP_005165.1; NP_001001973.1 |
| Blocking Peptide | EBP12461 |
| Immunogen | Peptide with sequence C-TLTFNRTRQAVITKE, from the C Terminus of the protein sequence according to NP_005165.1; NP_001001973.1. |
| Product Comments | This antibody is expected to recognize both reported isoforms (NP_005165.1; NP_001001973.1). |
| Peptide Sequence | C-TLTFNRTRQAVITKE |
| Purification Method | Purified from goat serum by ammonium sulphate precipitation followed by antigen affinity chromatography using the immunizing peptide. |

| | |
|------------------------------|---|
| Shipping Instructions | Refrigerated |
| Predicted Species | Human, Mouse, Rat, Dog, Cow |
| Reactive Species | Human, Rat |
| Human Gene ID | 509 |
| Mouse Gene ID | 11949 |
| Rat Gene ID | 116550 |
| Product Grade | https://prod-vector-labs-pimcore-assets.s3.us-east-1.amazonaws.com/assets/products/image/elite_medium.png |
| IHC Results | Paraffin embedded Human Heart. Recommended concentration: 5µg/ml. |
| ELISA | |
| Detection Limit | Antibody detection limit dilution 1:128000. |
| Western Blot | Approx 33kDa band observed in Human Heart and in Rat Heart lysates (calculated MW of 32.9kDa according to NP_005165.1). Recommended concentration: 0.01-0.03µg/ml. |
| Application Type | Pep-ELISA, WB, IHC |

DOCUMENTS

- [Data Sheet](#)

GALLERY IMAGES

