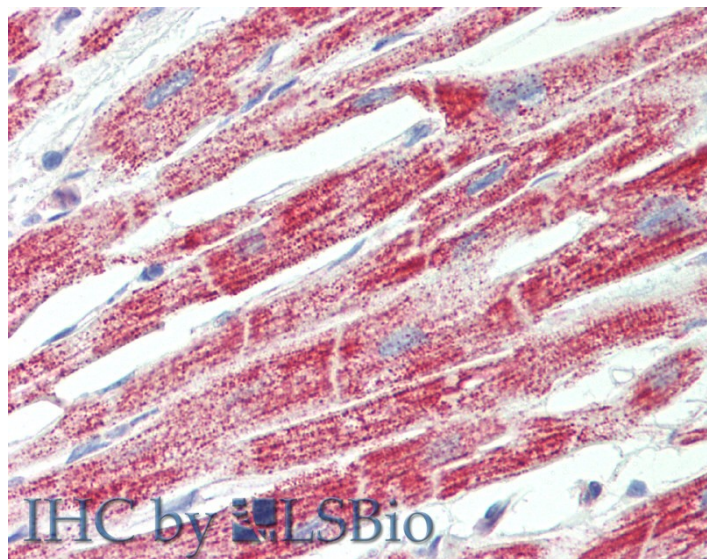


GOAT ANTI-ATP5F1 (AA142-153) ANTIBODY

SKU: EB12464



SPECIFICATIONS

Formulation Supplied at 0.5 mg/ml in Tris saline, 0.02% sodium azide, pH7.3 with 0.5% bovine serum albumin.

Unit Size 100 µg

Storage Instructions Aliquot and store at -20°C. Minimize freezing and thawing.

Synonym / Alias ATP synthase, H⁺ transport|ATP synthase, H⁺ transporting, mitochondrial F0 complex, subunit B1|ATP synthase subunit b, mitochondrial|ATP synthase B chain, mitochondrial|PIG47|ATP synthase, H⁺ transporting, mitochondrial Fo complex, subunit B1|ATP5F1

Accession ID NP_001679.2

Blocking Peptide EBP12464

Immunogen Peptide with sequence C-SIQHIQNAIDTE, from the internal region of the protein sequence according to NP_001679.2.

Peptide Sequence C-SIQHIQNAIDTE

Purification Method Purified from goat serum by ammonium sulphate precipitation followed by antigen affinity chromatography using the immunizing peptide.

Shipping Instructions Refrigerated

Predicted Species	Human
Reactive Species	Human
Human Gene ID	515
Product Grade	https://prod-vector-labs-pimcore-assets.s3.us-east-1.amazonaws.com/assets/products/image/elite_medium.png
IHC Results	Paraffin embedded Human Heart. Recommended concentration: 5µg/ml.
ELISA	
Detection Limit	Antibody detection limit dilution 1:128000.
Western Blot	Approx 25kDa band observed in Human Heart lysates (calculated MW of 28.9kDa according to NP_001679.2). This molecular weight is routinely observed by other sources. Recommended concentration: 0.03-0.1µg/ml. Primary incubation was 1 hour.
Application Type	Pep-ELISA, WB, IHC

DOCUMENTS

- [Data Sheet](#)

GALLERY IMAGES

