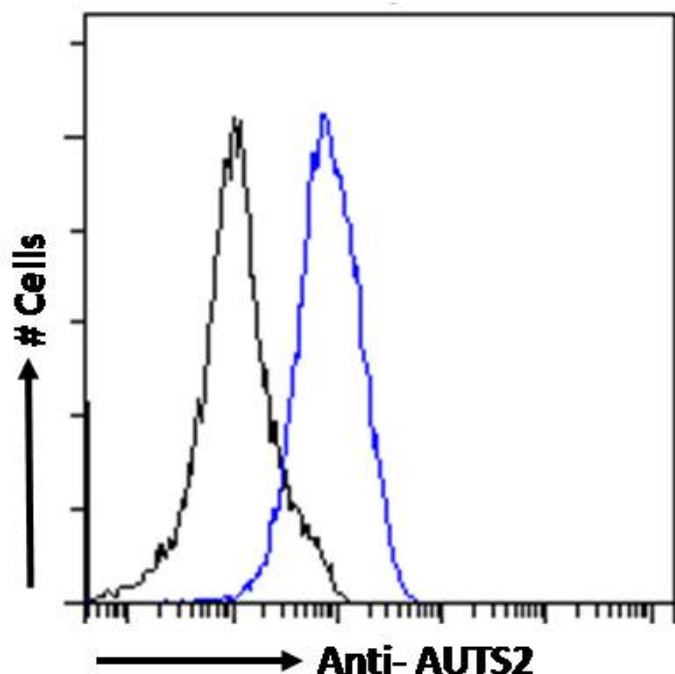


GOAT ANTI-AUTS2 ANTIBODY

SKU: EB09003



SPECIFICATIONS

Formulation Supplied at 0.5 mg/ml in Tris saline, 0.02% sodium azide, pH7.3 with 0.5% bovine serum albumin.

Unit Size 100 µg

Storage Instructions Aliquot and store at -20°C. Minimize freezing and thawing.

Synonym /

Alias Names autism-related protein 1|MGC13140|KIAA0442|autism susceptibility candidate 2|AUTS2

Usage Summary **Immunofluorescence:** Strong expression of the protein seen in the nuclei and cytoplasm of A431 and U2OS cells. Recommended concentration: 10µg/ml. **Flow Cytometry:** Flow cytometric analysis of A431 cells. Recommended concentration: 10ug/ml.

Accession ID NP_056385.1; NP_001120703.1;

Blocking Peptide EBP09003

Immunogen	Peptide with sequence C-ERPPSHTLKDIEAR , from the C Terminus of the protein sequence according to NP_056385.1; NP_001120703.1;
Product Comments	This antibody is expected to recognize NP_056385.1 isoforms 1 and NP_001120703.1 isoform 2.
Peptide Sequence	C-ERPPSHTLKDIEAR
Purification Method	Purified from goat serum by ammonium sulphate precipitation followed by antigen affinity chromatography using the immunizing peptide.
Shipping Instructions	Refrigerated
Predicted Species	Human, Mouse, Dog
Reactive Species	Human
Human Gene ID	26053
Mouse Gene ID	319974
Product Grade	https://prod-vector-labs-pimcore-assets.s3.us-east-1.amazonaws.com/assets/products/image/elite_medium.png
ELISA Detection Limit	Antibody detection limit dilution 1:32000.
Application Type	Pep-ELISA, IF, FC

DOCUMENTS

- [Data Sheet](#)

GALLERY IMAGES

