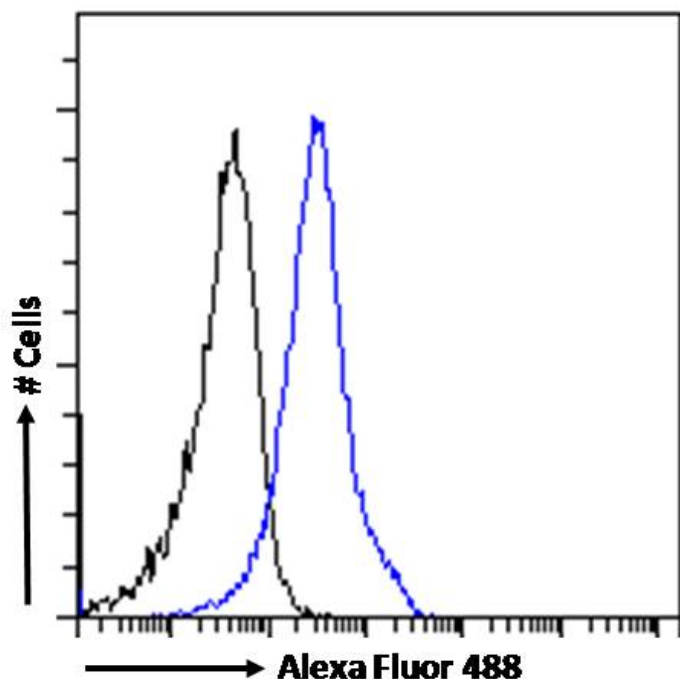


# GOAT ANTI-BAF53A AND BAF53B ANTIBODY

SKU: EB06344



## SPECIFICATIONS

**Formulation** Supplied at 0.5 mg/ml in Tris saline, 0.02% sodium azide, pH7.3 with 0.5% bovine serum albumin.

**Unit Size** 100 µg

**Storage Instructions** Aliquot and store at -20°C. Minimize freezing and thawing.

**Synonym / Alias Names** hArapN beta|actin-related protein 4|INO80 complex subunit K|BRG1-associated factor|BAF53|BAF complex 53 kDa subunit|MGC5382|INO80K|Arp4|ARPN-BETA|53 kDa BRG1-associated factor B|ACTL6B|ACTL6A|actin-related protein|hArapN alpha|actin-like 6B|actin-like 6A|BAF53b|BAF53a|ACTL6|BAF53B|BAF53A

**Usage Summary** **Immunofluorescence:** Strong expression of the protein seen in the nuclei of A431 and U2OS cells. Recommended concentration: 10µg/ml. **Flow Cytometry:** Flow cytometric analysis of A431 cells. Recommended concentration: 10ug/ml.

**Accession ID** NP\_004292.1; NP\_817126.1; NP\_057272.1

**Blocking Peptide** EBP06344

**Immunogen** Peptide with sequence YEEGGKQCVERKCP, from the C Terminus of the protein sequence according to NP\_004292.1; NP\_817126.1; NP\_057272.1.

<b>Product Comments</b>	This antibody is expected to recognise BAF53A isoforms 1 and 2 and BAF53B, which are almost identical
<b>Peptide Sequence</b>	YEEGGKQCVERKCP
<b>Purification Method</b>	Purified from goat serum by ammonium sulphate precipitation followed by antigen affinity chromatography using the immunizing peptide.
<b>Shipping Instructions</b>	Refrigerated
<b>Predicted Species</b>	Human, Mouse, Rat, Dog, Pig, Cow
<b>Reactive Species</b>	Human, Mouse, Rat
<b>Human Gene ID</b>	51412, 86
<b>Product Grade</b>	<a href="https://prod-vector-labs-pimcore-assets.s3.us-east-1.amazonaws.com/assets/products/image/elite_plus_medium.png">https://prod-vector-labs-pimcore-assets.s3.us-east-1.amazonaws.com/assets/products/image/elite_plus_medium.png</a>
<b>ELISA Detection Limit</b>	Antibody detection limit dilution 1:16000.
<b>Western Blot</b>	Approx 48kDa band observed in Rat Skeletal Muscle lysates and approx. 50kDa in nuclear lysates of cell line NIH3T3 and in preliminary testing of Human Colorectal cancer and Mouse Skeletal Muscle lysate.(predicted MW of 47.4kDa (Actl6a) according to Mouse NP_062647.2 and Rat NP_001034122.1 and 46.9kDa (Actl6b) according to Mouse NP_113581.1 and Rat NP_001099387.2) Recommended concentration:0.5-2µg/ml. Primary incubation 1 hour at room temperature.
<b>Application Type</b>	Pep-ELISA, WB, IF, FC

## DOCUMENTS

- [Data Sheet](#)

## GALLERY IMAGES

