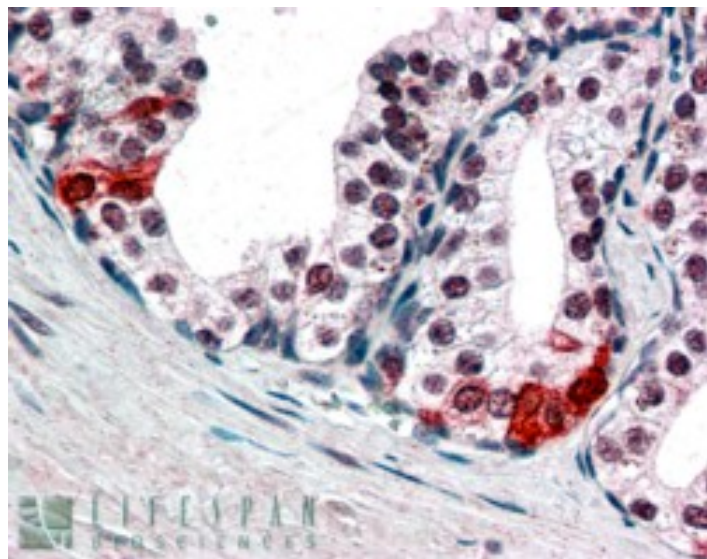


GOAT ANTI-BAF57 / SMARCE1 ANTIBODY

SKU: EB06054



SPECIFICATIONS

Formulation Supplied at 0.5 mg/ml in Tris saline, 0.02% sodium azide, pH7.3 with 0.5% bovine serum albumin.

Unit Size 100 µg

Storage Instructions Aliquot and store at -20°C. Minimize freezing and thawing.

Synonym / Alias Names SMARCE1|BAF57|SWI/SNF related, matrix associated, actin dependent regulator of chromatin, subfamily e, member 1|mammalian chromatin remodeling complex BRG1-associated factor 57|BAF57|SWI/SNF-related matrix-associated actin-dependent regulator of chromatin e1

Accession ID NP_003070.3

Blocking Peptide EBP06054

Immunogen Peptide with sequence C-PPTDPIPEDEKKE, from the C Terminus of the protein sequence according to NP_003070.3.

Peptide Sequence C-PPTDPIPEDEKKE

Purification Method Purified from goat serum by ammonium sulphate precipitation followed by antigen affinity chromatography using the immunizing peptide.

Shipping Instructions Refrigerated

Predicted Species	Human, Mouse
Reactive Species	Human
Human Gene ID	6605
Mouse Gene ID	57376
Product Grade	https://prod-vector-labs-pimcore-assets.s3.us-east-1.amazonaws.com/assets/products/image/elite_medium.png
IHC Results	In paraffin embedded Human Prostate shows nuclear staining in secretory epithelial cells. Recommended concentration, 3-5µg/ml.
ELISA	
Detection Limit	Antibody detection limit dilution 1:16000.
Western Blot	Approx 50kDa band observed in lysates of cell lines HEPG2, HeLa and Jurkat (calculated MW of 46.6kDa according to NP_003070.3). A 48kDa band was observed in transfected HEK293 transiently expressing BAF57. This band is not observed in the non-transfected HEK293. Recommended concentration: 0.2-0.6 µg/ml. Full caption: A) HEK293 overexpressing BAF57 (RC209444) and probed with EB06054 (mock transfection in first lane), tested by Origene. B) EB06054 staining (0.2µg/ml) of Jurkat lysate (RIPA buffer, 35µg total protein per lane). Primary incubated for 1 hour. Detected by western blot using chemiluminescence.
Application Type	Pep-ELISA, WB, IHC

DOCUMENTS

- [Data Sheet](#)

GALLERY IMAGES

