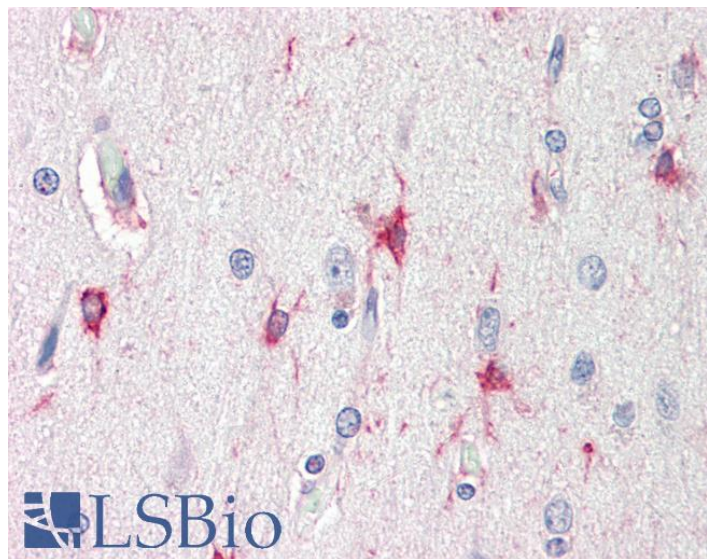


GOAT ANTI-BAG3 ANTIBODY

SKU: EB08096



SPECIFICATIONS

Formulation Supplied at 0.5 mg/ml in Tris saline, 0.02% sodium azide, pH7.3 with 0.5% bovine serum albumin.

Unit Size 100 µg

Storage Instructions Aliquot and store at -20°C. Minimize freezing and thawing.

Synonym / Alias Names BAG3|BCL2-associated athanogene 3|BAG-3|BIS|CAIR-1|MGC104307|BAG-family molecular chaperone regulator-3|BCL2-binding athanogene 3|Bcl-2-binding protein|docking protein CAIR-1

Accession ID NP_004272.2

Blocking Peptide EBP08096

Immunogen Peptide with sequence C-KNAGNAEDPHTE, from the internal region of the protein sequence according to NP_004272.2.

Peptide Sequence C-KNAGNAEDPHTE

Purification Method Purified from goat serum by ammonium sulphate precipitation followed by antigen affinity chromatography using the immunizing peptide.

Shipping Instructions Refrigerated

Predicted Species	Human
Reactive Species	Human
Human Gene ID	9531
Product Grade	https://prod-vector-labs-pimcore-assets.s3.us-east-1.amazonaws.com/assets/products/image/elite_medium.png
IHC Results	Paraffin embedded Human Brain (Cortex). Recommended concentration: 5µg/ml.
ELISA	
Detection Limit	Antibody detection limit dilution 1:16000.
Western Blot	Approx 70kDa band observed in Human Pancreas lysates (calculated MW of 61.6kDa according to NP_004272.2). Recommended concentration: 0.1-0.3µg/ml. Primary incubation was 1 hour.
Application Type	Pep-ELISA, WB, IHC

DOCUMENTS

- [Data Sheet](#)

GALLERY IMAGES

