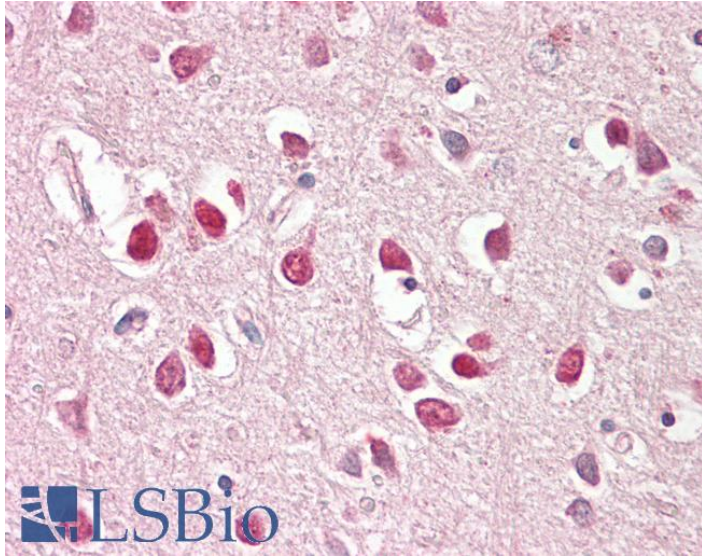




# GOAT ANTI-BAIAP2 (ISOFORM 3) ANTIBODY

**SKU:** EB05175



## SPECIFICATIONS

<b>Formulation</b>	Supplied at 0.5 mg/ml in Tris saline, 0.02% sodium azide, pH7.3 with 0.5% bovine serum albumin.
<b>Unit Size</b>	100 µg
<b>Storage Instructions</b>	Aliquot and store at -20°C. Minimize freezing and thawing.
<b>Synonym / Alias Names</b>	insulin receptor substrate p53/p58 insulin receptor substrate p53 fas ligand-associated factor 3 brain-specific angiogenesis inhibitor 1-associated protein 2 FLAF3 BAI1-associated protein 2 IRSP53 BAP2 BAIAP2
<b>Accession ID</b>	NP_006331.1
<b>Blocking Peptide</b>	EBP05175
<b>Immunogen</b>	Peptide with sequence C-SMSSADVEVARF, from the C Terminus of the protein sequence according to NP_006331.1.
<b>Product Comments</b>	This antibody will recognise only one of three reported isoforms (NP_006331.1).
<b>Peptide Sequence</b>	C-SMSSADVEVARF
<b>Purification Method</b>	Purified from goat serum by ammonium sulphate precipitation followed by antigen affinity chromatography using the immunizing peptide.

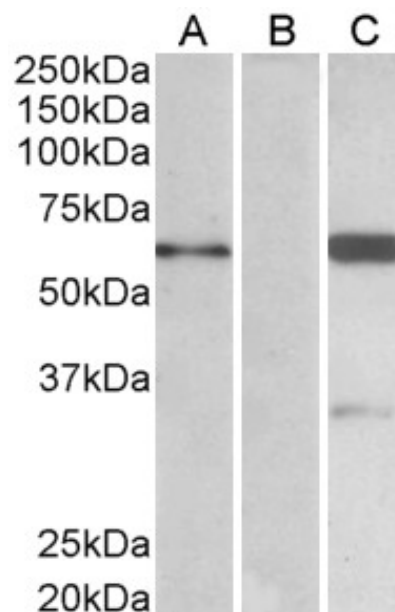
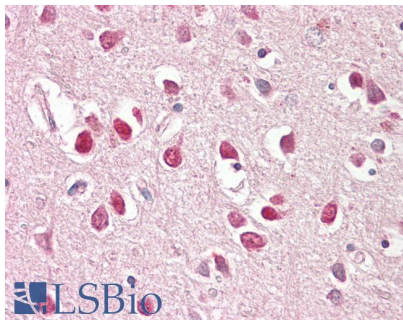


<b>Shipping Instructions</b>	Refrigerated
<b>Predicted Species</b>	Human, Dog, Cow
<b>Reactive Species</b>	Human
<b>Human Gene ID</b>	10458
<b>Product Grade</b>	<a href="https://prod-vector-labs-pimcore-assets.s3.us-east-1.amazonaws.com/assets/products/image/elite_medium.png">https://prod-vector-labs-pimcore-assets.s3.us-east-1.amazonaws.com/assets/products/image/elite_medium.png</a>
<b>IHC Results</b>	Paraffin embedded Human Brain (Cortex). Recommended concentration: 3.75µg/ml.
<b>ELISA</b>	
<b>Detection Limit</b>	Antibody detection limit dilution 1:8000.
<b>Western Blot</b>	In transfected HEK293 transiently expressing full-length Human BAIAP2 (myc and DYKDDDDK tagged), a band of approx. 60kDa was observed. No bands were observed in mock-transfected HEK293 and the same band was observed using anti-DYKDDDDK tag antibody. Recommended concentration, 1-2µg/ml.
<b>Application Type</b>	Pep-ELISA, WB-Trf, IHC

## DOCUMENTS

- [Data Sheet](#)

## GALLERY IMAGES





[www.everestbiotech.com](http://www.everestbiotech.com)

Email: [customerservice@vectorlabs.com](mailto:customerservice@vectorlabs.com)

Telephone: [\(650\) 697-3600](tel:(650)697-3600)