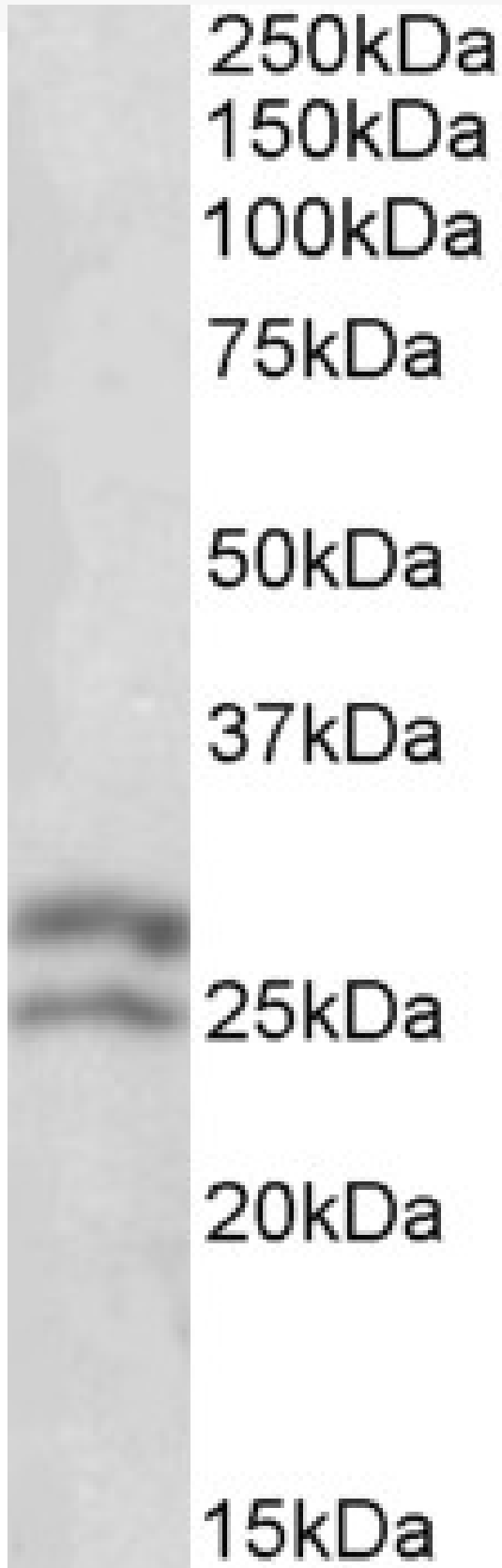


GOAT ANTI-BCL2 ANTIBODY

SKU: EB06444



SPECIFICATIONS

Formulation Supplied at 0.5 mg/ml in Tris saline, 0.02% sodium azide, pH7.3 with 0.5% bovine serum albumin.

Unit Size 100 µg

Storage Instructions Aliquot and store at -20°C. Minimize freezing and thawing.

Synonym /

Alias BCL2|Bcl-2|B-cell CLL/lymphoma 2|B-cell lymphoma protein 2|OTTHUMP00000163680

Names

Accession ID NP_000624.2; NP_000648.2

Blocking Peptide EBP06444

Immunogen Peptide with sequence AGRTGYDNREIVMKYC, from the N Terminus of the protein sequence according to NP_000624.2; NP_000648.2.

Product Comments This antibody is expected to recognise both reported isoforms (NP_000624; NP_000648)

Peptide Sequence AGRTGYDNREIVMKYC

Purification Method Purified from goat serum by ammonium sulphate precipitation followed by antigen affinity chromatography using the immunizing peptide.

Shipping Instructions Refrigerated

Predicted Species Human, Mouse, Rat, Dog

Reactive Species Human

Human Gene ID 596

Mouse Gene ID 12043

Rat Gene ID 24224

Product Grade https://prod-vector-labs-pimcore-assets.s3.us-east-1.amazonaws.com/assets/products/image/elite_medium.png

ELISA

Detection Limit Antibody detection limit dilution 1:64000.

Western Blot Approx 27+25kDa band observed in Human Lymph lysates (calculated MW of 26.3kDa according to NP_000624.2 and of 22.2kDa according to NP_000648.2). Recommended concentration: 0.1-0.3µg/ml.

Application Type Pep-ELISA, WB

DOCUMENTS

- [Data Sheet](#)

GALLERY IMAGES

