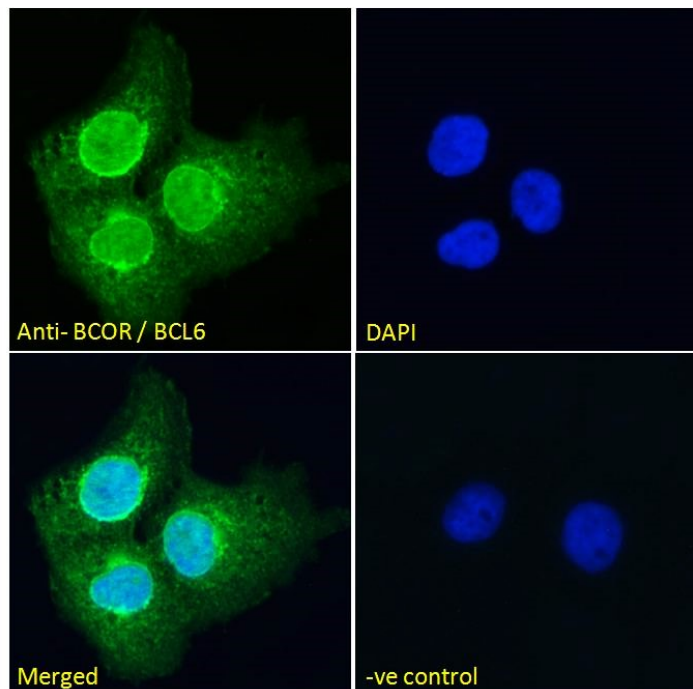


# GOAT ANTI-BCOR / BCL6 CO-REPRESSOR ANTIBODY

SKU: EB06026



## SPECIFICATIONS

**Formulation** Supplied at 0.5 mg/ml in Tris saline, 0.02% sodium azide, pH7.3 with 0.5% bovine serum albumin.

**Unit Size** 100 µg

**Storage Instructions** Aliquot and store at -20°C. Minimize freezing and thawing.

**Synonym / Alias Names** MCOPS2|8430401K06Rik|5830466J11Rik|MGC71031|MGC131961|MAA2|FLJ38041|ANOP2|BCL6 co-repressor|KIAA1575|FLJ20285|BCL-6 interacting corepressor|BCOR

**Usage Summary** <strong>Immunofluorescence:</strong> Strong expression of the protein seen in the nucleus of U2OS and A431 cells. Recommended concentration: 10µg/ml.

**Accession ID** NP\_060215.4; NP\_001116855.1; NP\_001116856.1; NP\_001116857.1

**Blocking Peptide** EBP06026

**Immunogen** Peptide with sequence LSATPLYGNVHSW-C, from the N Terminus of the protein sequence according to NP\_060215.4; NP\_001116855.1; NP\_001116856.1; NP\_001116857.1.

<b>Product</b>	This antibody is expected to recognise all reported isoforms. Variants (NP_060215.4; NP_001116855.1) encode
<b>Comments</b>	the same isoform.
<b>Peptide Sequence</b>	LSATPLYGNVHSW-C
<b>Purification Method</b>	Purified from goat serum by ammonium sulphate precipitation followed by antigen affinity chromatography using the immunizing peptide.
<b>Shipping Instructions</b>	Refrigerated
<b>Predicted Species</b>	Human, Mouse, Dog, Pig, Cow
<b>Reactive Species</b>	Human
<b>Human Gene ID</b>	54880
<b>Mouse Gene ID</b>	71458
<b>Product Grade</b>	<a href="https://prod-vector-labs-pimcore-assets.s3.us-east-1.amazonaws.com/assets/products/image/elite_medium.png">https://prod-vector-labs-pimcore-assets.s3.us-east-1.amazonaws.com/assets/products/image/elite_medium.png</a>
<b>ELISA Detection Limit</b>	Antibody detection limit dilution 1:128000.
<b>Application Type</b>	Pep-ELISA, IF

## DOCUMENTS

- [Data Sheet](#)

## GALLERY IMAGES

