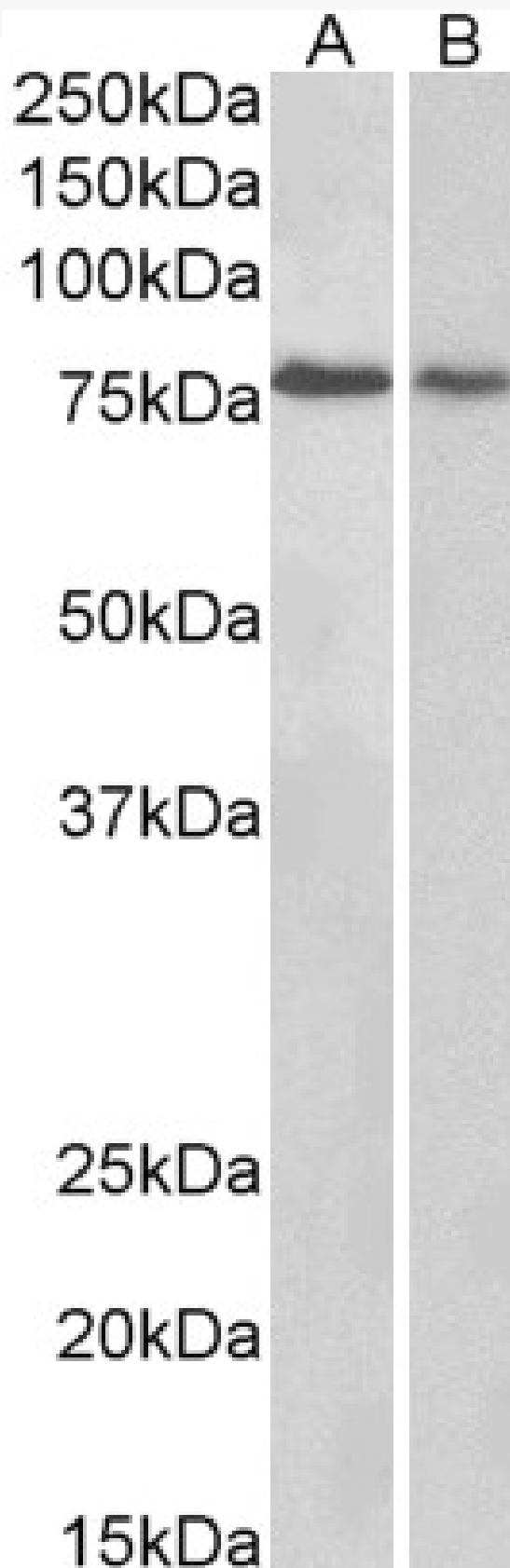


## GOAT ANTI-BERP / RNF22 ANTIBODY

**SKU:** EB05868



## SPECIFICATIONS

<b>Formulation</b>	Supplied at 0.5 mg/ml in Tris saline, 0.02% sodium azide, pH7.3 with 0.5% bovine serum albumin.
<b>Unit Size</b>	100 µg
<b>Storage Instructions</b>	Aliquot and store at -20°C. Minimize freezing and thawing.
<b>Synonym / Alias Names</b>	TRIM3 BERP RNF22 TRIM3 tripartite motif-containing 3 HAC1 RNF97 ring finger protein 22 brain expressed ring finger tripartite motif protein TRIM3 FLJ16135
<b>Accession ID</b>	NP_006449.2; NP_150594.2
<b>Blocking Peptide</b>	EBP05868
<b>Immunogen</b>	Peptide with sequence AKREDSPGPEVQP-C, from the N Terminus of the protein sequence according to NP_006449.2; NP_150594.2.
<b>Product Comments</b>	Both variants (NP_006449.2; NP_150594.2;) represent the same protein. This antibody is expected to recognise all three human isoforms of this protein.
<b>Peptide Sequence</b>	AKREDSPGPEVQP-C
<b>Purification Method</b>	Purified from goat serum by ammonium sulphate precipitation followed by antigen affinity chromatography using the immunizing peptide.
<b>Shipping Instructions</b>	Refrigerated
<b>Predicted Species</b>	Human, Mouse, Rat, Dog, Cow
<b>Reactive Species</b>	Human, Mouse, Rat
<b>Human Gene ID</b>	10612
<b>Mouse Gene ID</b>	55992
<b>Rat Gene ID</b>	83616
<b>Product Grade</b>	<a href="https://prod-vector-labs-pimcore-assets.s3.us-east-1.amazonaws.com/assets/products/image/elite_medium.png">https://prod-vector-labs-pimcore-assets.s3.us-east-1.amazonaws.com/assets/products/image/elite_medium.png</a>
<b>ELISA Detection Limit</b>	Antibody detection limit dilution 1:64000.
<b>Western Blot</b>	Approx 80kDa band observed in Human Brain (Cerebellum) and Rat Brain lysates and approx 85kDa band seen in Mouse Brain (calculated MW of 80.8kDa according to Human NP_006449.2, Mouse NP_001272799.1 and Rat NP_113974.1). Recommended concentration: 0.1-0.3µg/ml.
<b>Application Type</b>	Pep-ELISA, WB

## DOCUMENTS

- [Data Sheet](#)

## GALLERY IMAGES

