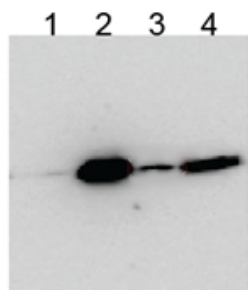


GOAT ANTI-BICC1 (AA223-234) ANTIBODY

SKU: EB09818



1. native, EB09818
2. native, anti-FLAG
3. SDS, EB09818
4. SDS, anti-FLAG

SPECIFICATIONS

Formulation Supplied at 0.5 mg/ml in Tris saline, 0.02% sodium azide, pH7.3 with 0.5% bovine serum albumin.

Unit Size 100 µg

Storage Instructions Aliquot and store at -20°C. Minimize freezing and thawing.

Synonym /

Alias Names BICC1|DKFZp686I21119|bicaudal C homolog 1 (Drosophila)|bicaudal C homolog 1

Usage Summary **Immunoprecipitation:** Immunoprecipitation by EB09818 from lysates of HEK293 transfected and overexpressing FLAG-HA-BICC1. Precipitation works best in the presence of SDS. Data kindly provided by anonymous customer.

Accession ID NP_001073981.1

Blocking Peptide EBP09818

Immunogen Peptide with sequence C-PNSPSIQHISQT, from the internal region of the protein sequence according to NP_001073981.1.

Peptide Sequence C-PNSPSIQHISQT

Purification Method Purified from goat serum by ammonium sulphate precipitation followed by antigen affinity chromatography using the immunizing peptide.

Shipping Instructions Refrigerated

Predicted Species Human, Rat, Dog, Cow

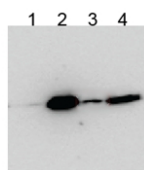
Reactive Species Human

Human Gene ID	80114
Rat Gene ID	361832
Product Grade	https://prod-vector-labs-pimcore-assets.s3.us-east-1.amazonaws.com/assets/products/image/elite_medium.png
ELISA Detection Limit	Antibody detection limit dilution 1:8000.
Western Blot	Preliminary experiments in Human Brain (Cerebellum), Kidney, Lung and Pancreas lysates gave no specific signal but low background (at antibody concentration up to 1µg/ml). We would appreciate any feedback from people in the field - have any results been reported with other antibodies/lysates?
Application Type	Pep-ELISA, IP

DOCUMENTS

- [Data Sheet](#)

GALLERY IMAGES



1. native, EB09818
2. native, anti-FLAG
3. SDS, EB09818
4. SDS, anti-FLAG