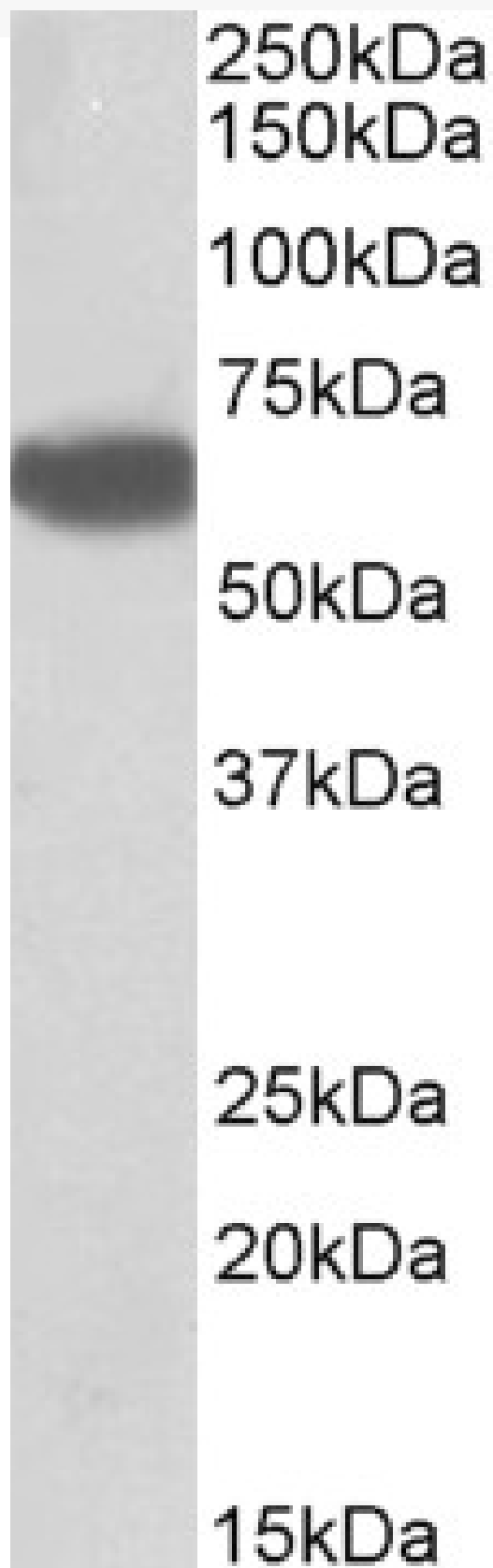


GOAT ANTI-BIOTINIDASE (AA372-385) ANTIBODY

SKU: EB11942



SPECIFICATIONS

Formulation	Supplied at 0.5 mg/ml in Tris saline, 0.02% sodium azide, pH7.3 with 0.5% bovine serum albumin.
Unit Size	100 µg
Storage Instructions	Aliquot and store at -20°C. Minimize freezing and thawing.
Synonym / Alias Names	biotinase OTTHUMP00000209138 OTTHUMP00000209135 OTTHUMP00000209134 OTTHUMP00000160300 biotinidase BTD
Accession ID	NP_000051.1
Blocking Peptide	EBP11942
Immunogen	Peptide with sequence EKDAQEVHCDEATK, from the internal region of the protein sequence according to NP_000051.1.
Peptide Sequence	EKDAQEVHCDEATK
Purification Method	Purified from goat serum by ammonium sulphate precipitation followed by antigen affinity chromatography using the immunizing peptide.
Shipping Instructions	Refrigerated
Predicted Species	Human
Reactive Species	Human
Human Gene ID	686
Product Grade	https://prod-vector-labs-pimcore-assets.s3.us-east-1.amazonaws.com/assets/products/image/elite_medium.png
ELISA Detection Limit	Antibody detection limit dilution 1:4000.
Western Blot	Approx 60kDa band observed in Human Liver lysates (calculated MW of 61.1kDa according to NP_000051.1). Recommended concentration: 0.5-1.5µg/ml.
Application Type	Pep-ELISA, WB

DOCUMENTS

- [Data Sheet](#)

GALLERY IMAGES

