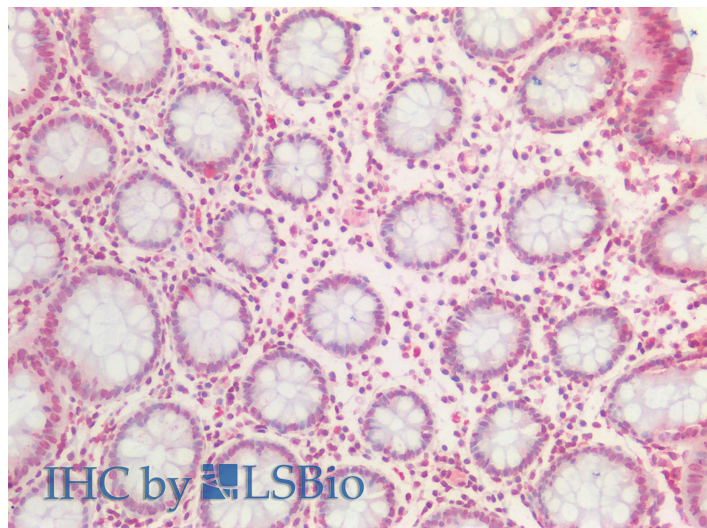


GOAT ANTI-BMI1 ANTIBODY

SKU: EB12496



SPECIFICATIONS

Formulation Supplied at 0.5 mg/ml in Tris saline, 0.02% sodium azide, pH7.3 with 0.5% bovine serum albumin.

Unit Size 100 µg

Storage Instructions Aliquot and store at -20°C. Minimize freezing and thawing.

Synonym / Alias polycomb |polycomb group RING finger protein 4|polycomb complex protein BMI-1|murine leukemia viral (bmi-1) oncogene homolog|flvi-2/bmi-1|B lymphoma Mo-MLV insertion region 1
Names homolog|RNF51|PCGF4|FLVI2/BMI1|BMI1 polycomb ring finger oncogene|BMI1

Accession ID NP_005171.4

Blocking Peptide EBP12496

Immunogen Peptide with sequence C-NHQSSFANRPRKS, from the C Terminus of the protein sequence according to NP_005171.4.

Peptide Sequence C-NHQSSFANRPRKS

Purification Method Purified from goat serum by ammonium sulphate precipitation followed by antigen affinity chromatography using the immunizing peptide.

Shipping Instructions Refrigerated

Predicted Species	Human, Dog, Pig, Cow
Reactive Species	Human
Human Gene ID	648
Product Grade	https://prod-vector-labs-pimcore-assets.s3.us-east-1.amazonaws.com/assets/products/image/elite_medium.png
IHC Results	Paraffin embedded Human Colon. Recommended concentration: 5µg/ml.
ELISA	
Detection Limit	Antibody detection limit dilution 1:128000.
Western Blot	Approx 40kDa band observed in nuclear lysates of cell line K562 (calculated MW of 36.9kDa according to NP_005171.4). This band corresponds to earlier findings in literature with different antibodies (Chagraoui et al, Genes Dev. 2006 Aug 1;20(15):2110-20. PMID: 16882984). Recommended concentration: 0.03-0.1µg/ml.
Application Type	Pep-ELISA, WB, IHC

DOCUMENTS

- [Data Sheet](#)

GALLERY IMAGES

