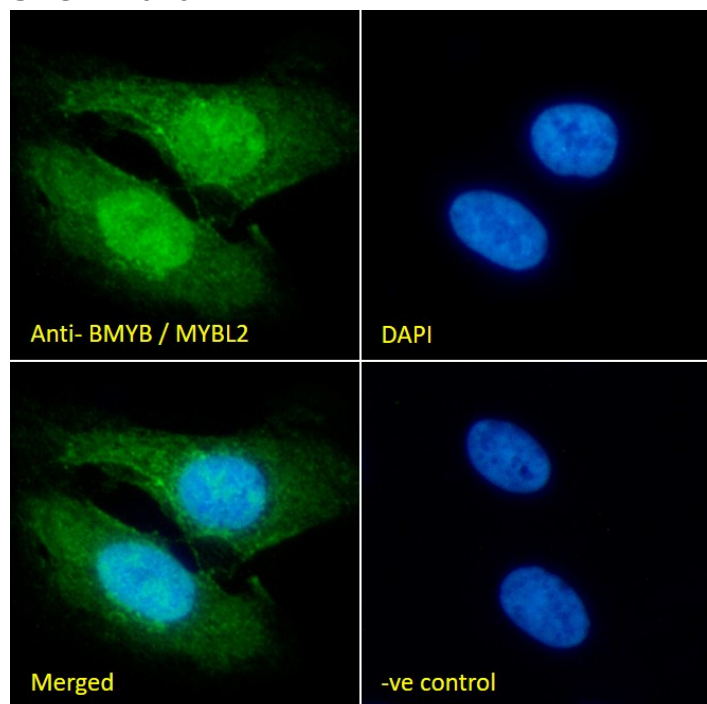


## GOAT ANTI-BMYB / MYBL2 ANTIBODY

SKU: EB07014



## SPECIFICATIONS

<b>Formulation</b>	Supplied at 0.5 mg/ml in Tris saline, 0.02% sodium azide, pH7.3 with 0.5% bovine serum albumin.
<b>Unit Size</b>	100 µg
<b>Storage Instructions</b>	Aliquot and store at -20°C. Minimize freezing and thawing.
<b>Synonym / Alias Names</b>	B-MYB v-myb avian myeloblastosis viral oncogene homolog-like 2 MYB-related protein B MGC15600 HGNC:7548 v-myb myeloblastosis viral oncogene homolog (avian)-like 2 BMYB MYBL2
<b>Usage Summary</b>	<strong>Immunofluorescence:</strong> Strong expression of the protein seen in the nuclei and cytoplasm of A431 and U2OS cells. Recommended concentration: 10µg/ml. <strong>Flow Cytometry:</strong> Flow cytometric analysis of A431 cells. Recommended concentration: 10ug/ml.
<b>Accession ID</b>	NP_002457.1; NP_001265539.1
<b>Blocking Peptide</b>	EBP07014

<b>Immunogen</b>	Peptide with sequence C-QEKARQLLGRLKPSH, from the C Terminus of the protein sequence according to NP_002457.1; NP_001265539.1.
<b>Peptide Sequence</b>	C-QEKARQLLGRLKPSH
<b>Purification Method</b>	Purified from goat serum by ammonium sulphate precipitation followed by antigen affinity chromatography using the immunizing peptide.
<b>Shipping Instructions</b>	Refrigerated
<b>Predicted Species</b>	Human, Cow
<b>Reactive Species</b>	Human
<b>Human Gene ID</b>	4605
<b>Mouse Gene ID</b>	17865
<b>Rat Gene ID</b>	296344
<b>Product Grade</b>	<a href="https://prod-vector-labs-pimcore-assets.s3.us-east-1.amazonaws.com/assets/products/image/elite_plus_medium.png">https://prod-vector-labs-pimcore-assets.s3.us-east-1.amazonaws.com/assets/products/image/elite_plus_medium.png</a>
<b>ELISA Detection Limit</b>	Antibody detection limit dilution 1:32000.
<b>Western Blot</b>	EB07014 optimised QC. Primary incubation 1 hour at room temperature. Image A: Human Spleen lysate at primary Ab concentration 1ug/ml. (Loaded 35µg protein in RIPA buffer, per lane). Detected by chemiluminescence.
<b>Application Type</b>	Pep-ELISA, WB, IF, FC

## DOCUMENTS

- [Data Sheet](#)

## GALLERY IMAGES

