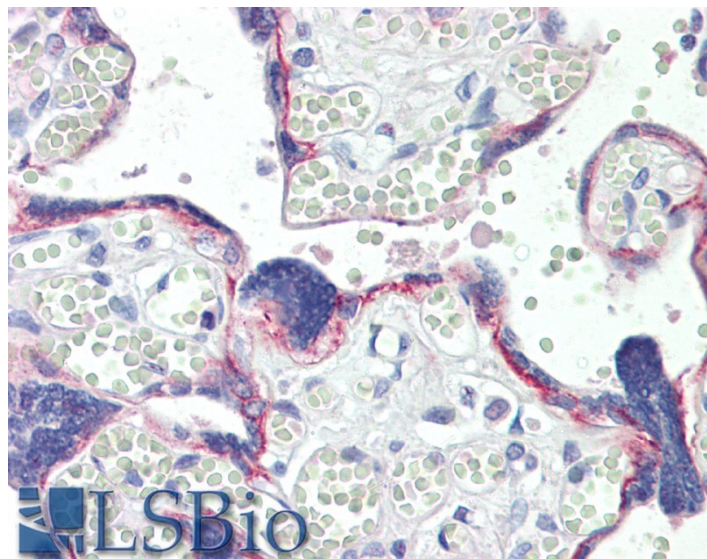


GOAT ANTI-BOD1 ANTIBODY

SKU: EB09852



SPECIFICATIONS

Formulation Supplied at 0.5 mg/ml in Tris saline, 0.02% sodium azide, pH7.3 with 0.5% bovine serum albumin.

Unit Size 100 µg

Storage Instructions Aliquot and store at -20°C. Minimize freezing and thawing.

Synonym / Alias Names biorientation defective 1|biorientation of chromosomes in cell division 1|FAM44B|family with sequence similarity 44, member B|BOD1

Accession ID NP_612378.1; NP_001153123.1

Blocking Peptide EBP09852

Immunogen Peptide with sequence C-NFVSTHLDKQE, from the internal region of the protein sequence according to NP_612378.1; NP_001153123.1.

Product Comments This antibody is expected to recognize isoforms a and b (NP_612378.1; NP_001153123.1).

Peptide Sequence C-NFVSTHLDKQE

Purification Method Purified from goat serum by ammonium sulphate precipitation followed by antigen affinity chromatography using the immunizing peptide.

Shipping Instructions	Refrigerated
Predicted Species	Human, Mouse, Rat, Dog
Reactive Species	Human
Human Gene ID	91272
Mouse Gene ID	69556
Rat Gene ID	287173
Product Grade	https://prod-vector-labs-pimcore-assets.s3.us-east-1.amazonaws.com/assets/products/image/elite_medium.png
IHC Results	Paraffin embedded Human Placenta. Recommended concentration: 10µg/ml.
ELISA	
Detection Limit	Antibody detection limit dilution 1:16000.
Western Blot	Preliminary experiments gave an approx 37kDa band in Human Lung and Testis lysates after 1µg/ml antibody staining. Please note that currently we cannot find an explanation in the literature for the band we observe given the calculated size of 19.2kDa according to NP_612378.1. The 37kDa band was successfully blocked by incubation with the immunizing peptide.
Application Type	Pep-ELISA, IHC

DOCUMENTS

- [Data Sheet](#)

GALLERY IMAGES

