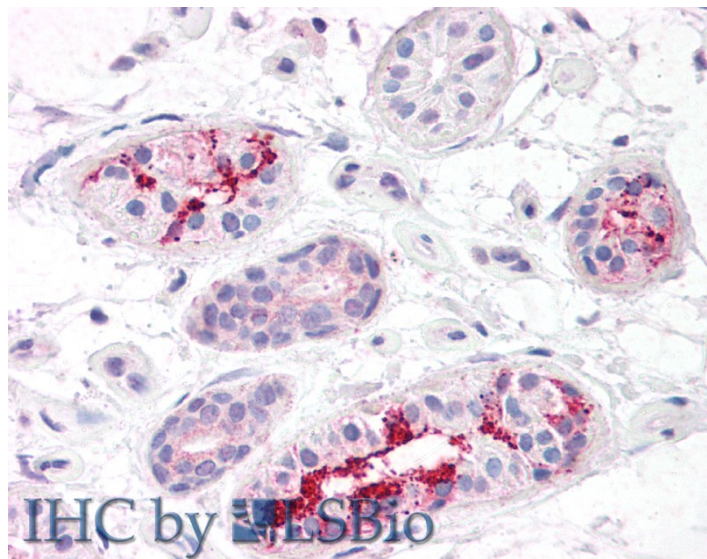


GOAT ANTI-BOD1L (AA2802-2815) ANTIBODY

SKU: EB11986



SPECIFICATIONS

Formulation	Supplied at 0.5 mg/ml in Tris saline, 0.02% sodium azide, pH7.3 with 0.5% bovine serum albumin.
Unit Size	100 µg
Storage Instructions	Aliquot and store at -20°C. Minimize freezing and thawing.
Synonym / Alias Names	Bod1L biorientation of chromosomes in cell division 1-like FAM44A KIAA1327 family with sequence similarity 44, member A
Accession ID	NP_683692.2
Blocking Peptide	EBP11986
Immunogen	Peptide with sequence CPETEPHDTKEENS, from the internal region (near C Terminus) of the protein sequence according to NP_683692.2.
Peptide Sequence	CPETEPHDTKEENS
Purification Method	Purified from goat serum by ammonium sulphate precipitation followed by antigen affinity chromatography using the immunizing peptide.
Shipping Instructions	Refrigerated

Predicted Species	Human, Mouse
Reactive Species	Human
Human Gene ID	259282
Mouse Gene ID	665775
Product Grade	https://prod-vector-labs-pimcore-assets.s3.us-east-1.amazonaws.com/assets/products/image/elite_medium.png
IHC Results	Paraffin embedded Human Brain (Cortex) and Skin. Recommended concentration: 5µg/ml.
ELISA	
Detection Limit	Antibody detection limit dilution 1:4000.
Application Type	Pep-ELISA, IHC

DOCUMENTS

- [Data Sheet](#)

GALLERY IMAGES

