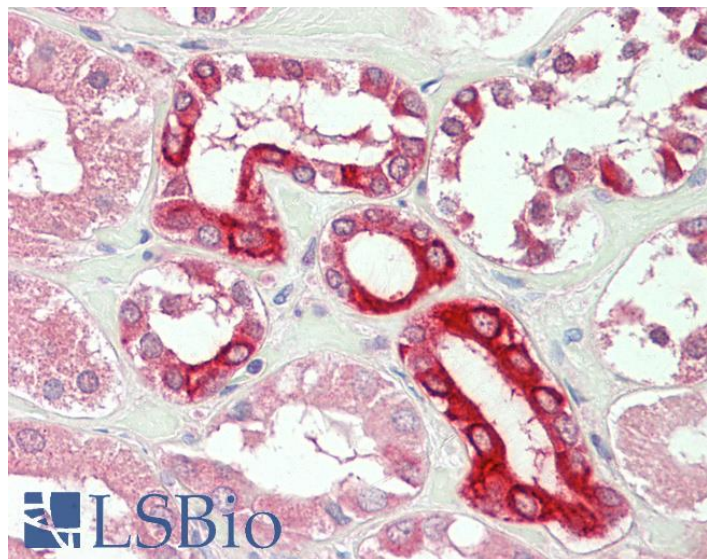


GOAT ANTI-BOK ANTIBODY

SKU: EB10361



SPECIFICATIONS

Formulation Supplied at 0.5 mg/ml in Tris saline, 0.02% sodium azide, pH7.3 with 0.5% bovine serum albumin.

Unit Size 100 µg

Storage Instructions Aliquot and store at -20°C. Minimize freezing and thawing.

Synonym /

Alias BOK|MGC4631|BOKL|BCL2-related ovarian killer|BCL2L9

Names

Accession ID NP_115904.1

Blocking Peptide EBP10361

Immunogen Peptide with sequence C-HISLQSEPVVTD, from the internal region of the protein sequence according to NP_115904.1.

Peptide Sequence C-HISLQSEPVVTD

Purification Method Purified from goat serum by ammonium sulphate precipitation followed by antigen affinity chromatography using the immunizing peptide.

Shipping Instructions Refrigerated

Predicted Species	Human, Mouse, Cow
Reactive Species	Human
Human Gene ID	666
Mouse Gene ID	51800
Product Grade	https://prod-vector-labs-pimcore-assets.s3.us-east-1.amazonaws.com/assets/products/image/elite_medium.png
IHC Results	Paraffin embedded Human Kidney. Recommended concentration: 5µg/ml.
ELISA	
Detection Limit	Antibody detection limit dilution 1:8000.
Western Blot	Preliminary experiments gave bands at approx 55kDa and 20kDa in Human Testis lysates after 1µg/ml antibody staining, and 17kDa in Mouse Spleen and Thymus lysates after 0.3ug/ml antibody staining. Please note that currently we cannot find an explanation in the literature for the bands we observe given the calculated size of 23.3kDa according to NP_115904.1. Both detected bands were successfully blocked by incubation with the immunizing peptide (and BLAST results with the immunizing peptide sequence did not identify any other proteins to explain the additional bands).
Application Type	Pep-ELISA, IHC

DOCUMENTS

- [Data Sheet](#)

GALLERY IMAGES

