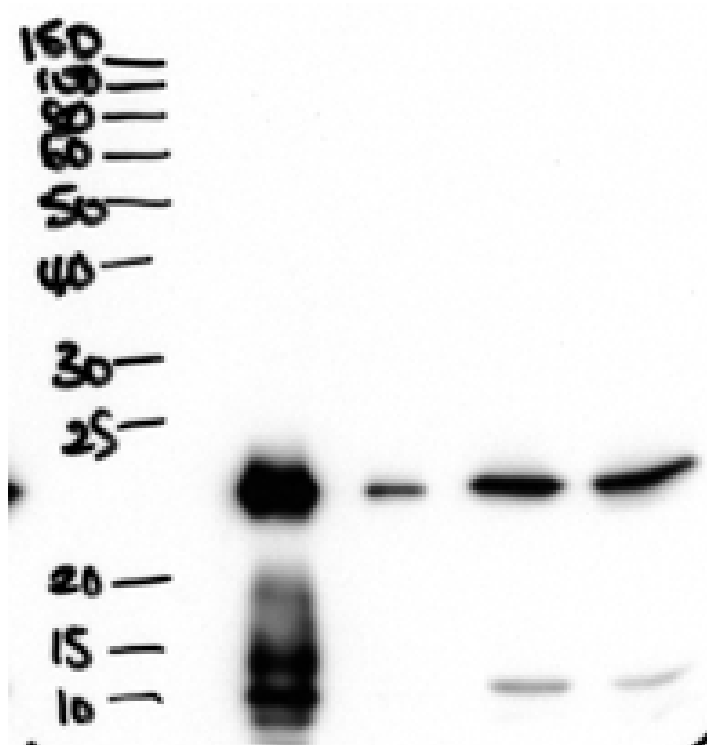


GOAT ANTI-BPIFA1 / PLUNC ANTIBODY

SKU: EB11482



SPECIFICATIONS

Formulation Supplied at 0.5 mg/ml in Tris saline, 0.02% sodium azide, pH7.3 with 0.5% bovine serum albumin.

Unit Size 100 µg

Storage Instructions Aliquot and store at -20°C. Minimize freezing and thawing.

Synonym / Alias Names bA49G10.5|BPI fold containing family A, member 1|BPIFA1|ligand-binding protein RYA3|LPLUNC3|lung-specific protein X|LUNX|NASG|nasopharyngeal carcinoma-related protein|OTTHUMP00000030625|OTTHUMP00000030626|OTTHUMP00000030627|palate lung and nasal epithelium clone protein|palate, lung and nasal epithelium associated|PLUNC|protein Plunc|secretory protein in upper respiratory tracts|SPLUNC1|SPURT|tracheal epithelium enriched protein|tracheal epithelium-enriched protein|von Ebner protein HI

Accession ID NP_057667.1

Blocking Peptide EBP11482

Immunogen	Peptide with sequence RDKQERIHLVLGDC, from the internal region of the protein sequence according to NP_057667.1.
Product Comments	Reported variants represent identical protein: NP_057667.1, NP_001230122.1, NP_570913.1
Peptide Sequence	RDKQERIHLVLGDC
Purification Method	Purified from goat serum by ammonium sulphate precipitation followed by antigen affinity chromatography using the immunizing peptide.
Shipping Instructions	Refrigerated
Predicted Species	Human
Reactive Species	Human
Human Gene ID	51297
Product Grade	https://prod-vector-labs-pimcore-assets.s3.us-east-1.amazonaws.com/assets/products/image/elite_medium.png
ELISA Detection Limit	Antibody detection limit dilution 1:128000.
Western Blot	Approx 26kDa band observed in secretions of Human primary airway cells in culture-and in Human Bronchoalveolar Lavage fluid (calculated MW of 26.7kDa according to NP_057667.1). Recommended concentration: 1-3µg/ml.
Application Type	Pep-ELISA, WB

DOCUMENTS

- [Data Sheet](#)

GALLERY IMAGES

