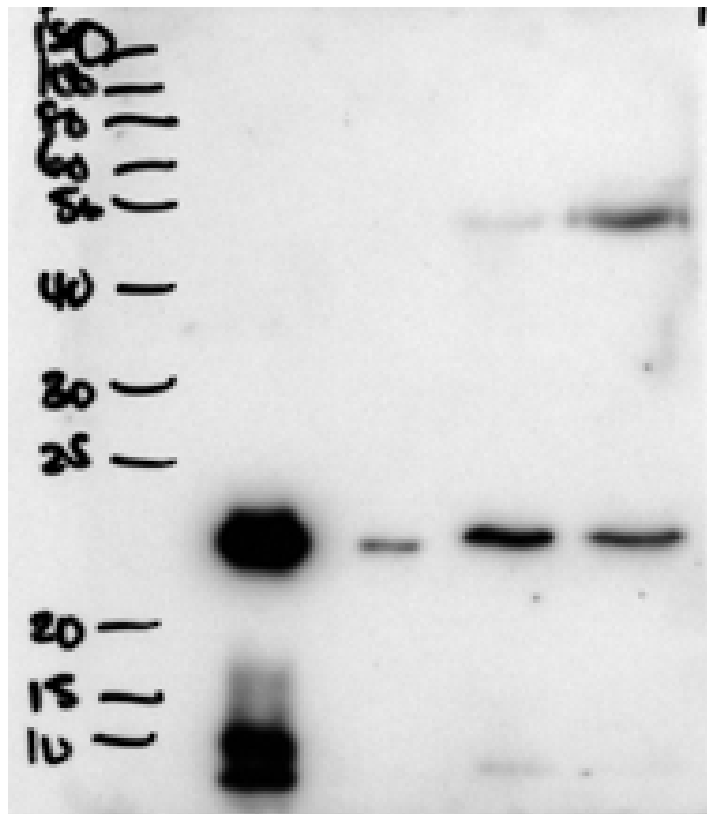


## GOAT ANTI-BPIFA1 / PLUNC ANTIBODY

SKU: EB11481



## SPECIFICATIONS

**Formulation** Supplied at 0.5 mg/ml in Tris saline, 0.02% sodium azide, pH7.3 with 0.5% bovine serum albumin.

**Unit Size** 100 µg

**Storage Instructions** Aliquot and store at -20°C. Minimize freezing and thawing.

**Synonym / Alias Names** von Ebner protein HI|tracheal epithelium-enriched protein|tracheal epithelium enriched protein|SPURT|SPLUNC1|secretory protein in upper respiratory tracts|protein Plunc|PLUNC|palate, lung and nasal epithelium associated|palate lung and nasal epithelium clone protein|OTTHUMP00000030627|OTTHUMP00000030626|OTTHUMP00000030625|nasopharyngeal carcinoma-related protein|NASG|LUNX|lung-specific protein X|LPLUNC3|ligand-binding protein RYA3|BPIFA1|BPI fold containing family A, member 1|bA49G10.5

**Accession ID** NP\_057667.1

<b>Blocking Peptide</b>	EBP11481
<b>Immunogen</b>	Peptide with sequence C-NEVLRGLDITLVHD, from the C Terminus of the protein sequence according to NP_057667.1.
<b>Product Comments</b>	Reported variants represent identical protein: NP_057667.1, NP_001230122.1, NP_570913.1
<b>Peptide Sequence</b>	C-NEVLRGLDITLVHD
<b>Purification Method</b>	Purified from goat serum by ammonium sulphate precipitation followed by antigen affinity chromatography using the immunizing peptide.
<b>Shipping Instructions</b>	Refrigerated
<b>Predicted Species</b>	Human
<b>Reactive Species</b>	Human
<b>Human Gene ID</b>	51297
<b>Product Grade</b>	<a href="https://prod-vector-labs-pimcore-assets.s3.us-east-1.amazonaws.com/assets/products/image/elite_medium.png">https://prod-vector-labs-pimcore-assets.s3.us-east-1.amazonaws.com/assets/products/image/elite_medium.png</a>
<b>ELISA Detection Limit</b>	Antibody detection limit dilution 1:64000.
<b>Western Blot</b>	Approx 26kDa band observed in secretions of Human primary airway cells in culture-and in Human Bronchoalveolar Lavage fluid (calculated MW of 26.7kDa according to NP_057667.1). Recommended concentration: 1-3µg/ml.
<b>Application Type</b>	Pep-ELISA, WB

## DOCUMENTS

- [Data Sheet](#)

## GALLERY IMAGES

