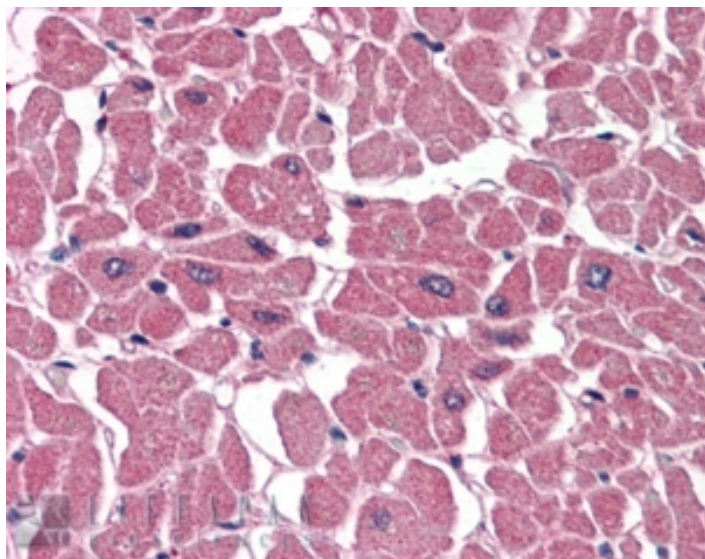


GOAT ANTI-BPOZ / ABTB1 ANTIBODY

SKU: EB05200



SPECIFICATIONS

Formulation Supplied at 0.5 mg/ml in Tris saline, 0.02% sodium azide, pH7.3 with 0.5% bovine serum albumin.

Unit Size 100 µg

Storage Instructions Aliquot and store at -20°C. Minimize freezing and thawing.

Synonym / Alias Names PP2259|Btb3|elongation factor 1A binding protein|ankyrin repeat and BTB (POZ) domain containing 1|MGC20585|EF1ABP|BPOZ|ABTB1

Accession ID NP_115937.1; NP_742024.1

Blocking Peptide EBP05200

Immunogen Peptide with sequence RALEDLLVSI~~GLDC~~, from the C Terminus of the protein sequence according to NP_115937.1; NP_742024.1.

Product Comments This antibody is expected to recognise all reported isoforms (NP_115937.1; NP_742024.1; NP_742025.1).

Peptide Sequence RALEDLLVSI~~GLDC~~

Purification Method Purified from goat serum by ammonium sulphate precipitation followed by antigen affinity chromatography using the immunizing peptide.

Shipping Instructions	Refrigerated
Predicted Species	Human, Mouse, Rat, Dog
Reactive Species	Human
Human Gene ID	80325
Mouse Gene ID	80283
Product Grade	https://prod-vector-labs-pimcore-assets.s3.us-east-1.amazonaws.com/assets/products/image/elite_medium.png
IHC Results	Paraffin embedded Human Heart and Brain (Cerebellum). Recommended concentration: 3.75µg/ml.
ELISA Detection Limit	Antibody detection limit dilution 1:32000.
Western Blot	Approx 38kDa band observed in Human Heart lysates, and approx. 50kDa in preliminary testing of MCF7 cell lysate (calculated MW of 37.6kDa according to NP_115937.1 and 54kDa according to ; NP_742024.1). An additional band was also consistently observed at 65-70xkDa. and was successfully blocked by incubation with the immunizing peptide. Recommended concentration: 1-3µg/ml. Primary incubation 1 hour at room temperature.
Application Type	Pep-ELISA, WB, IHC

DOCUMENTS

- [Data Sheet](#)

GALLERY IMAGES

