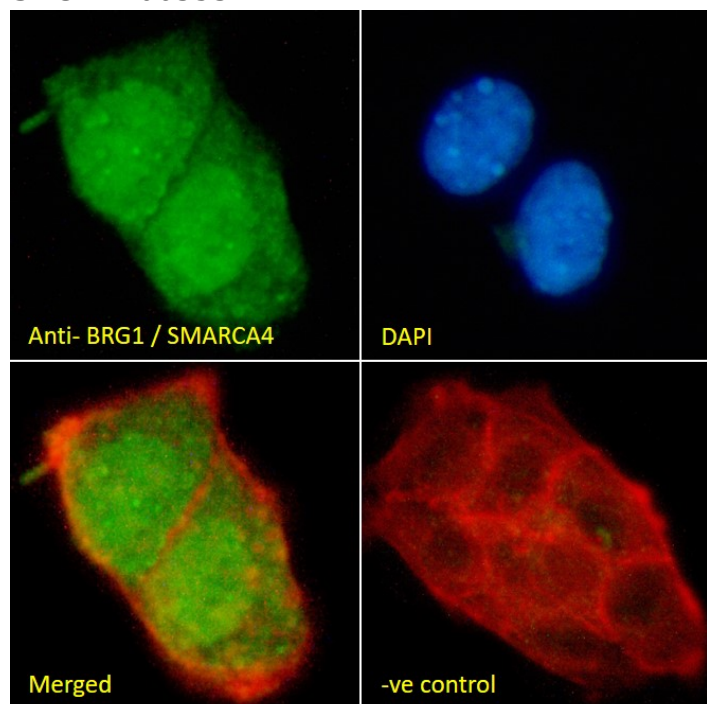


GOAT ANTI-BRG1 / SMARCA4 ANTIBODY

SKU: EB06353



SPECIFICATIONS

Formulation	Supplied at 0.5 mg/ml in Tris saline, 0.02% sodium azide, pH7.3 with 0.5% bovine serum albumin.
Unit Size	100 µg
Storage	Aliquot and store at -20°C. Minimize freezing and thawing.
Instructions	
Synonym / Alias Names	global transcription activator homologous sequence mitotic growth and transcription activator sucrose nonfermenting-like 4 homeotic gene regulator BRM/SWI2-related gene 1 brahma protein-like 1 nuclear protein GRB1 SNF2-like 4 SNF2-beta SWI/SNF related, matrix associated, actin dependent regulator of chromatin, subfamily a, member 4 SNF2-BETA hSNF2b hSNF2B SNF2LB SNF2L4 BAF190 BRG1 SMARCA4
Usage Summary	Immunofluorescence: Strong expression of the protein seen in the nuclei of A431 and U2OS cells. Recommended concentration: 10µg/ml. Flow Cytometry: Flow cytometric analysis of A431 cells. Recommended concentration: 10ug/ml.
Accession ID	NP_001122321.1; NP_003063.2; NP_001122317.1; NP_001122318.1; NP_001122319.1; NP_001122320.1
Blocking Peptide	EBP06353

Immunogen	Peptide with sequence STDPPLGGTPRP-C, from the N Terminus of the protein sequence according to NP_001122321.1; NP_003063.2; NP_001122317.1; NP_001122318.1; NP_001122319.1; NP_001122320.1.
Product Comments	This antibody is expected to recognize all reported isoforms (NP_001122321.1; NP_003063.2; NP_001122317.1; NP_001122318.1; NP_001122319.1; NP_001122320.1). Reported variants NP_003063.2 and NP_001122316.1 represent identical protein.
Peptide Sequence	STDPPLGGTPRP-C
Purification Method	Purified from goat serum by ammonium sulphate precipitation followed by antigen affinity chromatography using the immunizing peptide.
Shipping Instructions	Refrigerated
Predicted Species	Human, Mouse, Rat, Dog
Reactive Species	Human
Human Gene ID	6597
Mouse Gene ID	20586
Rat Gene ID	171379
Product Grade	https://prod-vector-labs-pimcore-assets.s3.us-east-1.amazonaws.com/assets/products/image/elite_plus_medium.png
IHC Results	Paraffin embedded Human Small Intestine, Tonsil and Prostate. Recommended concentration: 3.75µg/ml.
ELISA	
Detection Limit	Antibody detection limit dilution 1:16000.
Western Blot	Approx. 200-250kDa band observed in nuclear lysates of cell line Jurkat (calculated MW of 185kDa according to NP_003063.2). This molecular weight is observed by other commercial sources, and was blocked by incubation with the immunizing peptide. Recommended concentration: 0.01-0.03ug/ml. Primary incubation 1 hour at room temperature.
Application Type	Pep-ELISA, WB, IF, IHC, FC

DOCUMENTS

- [Data Sheet](#)

GALLERY IMAGES

