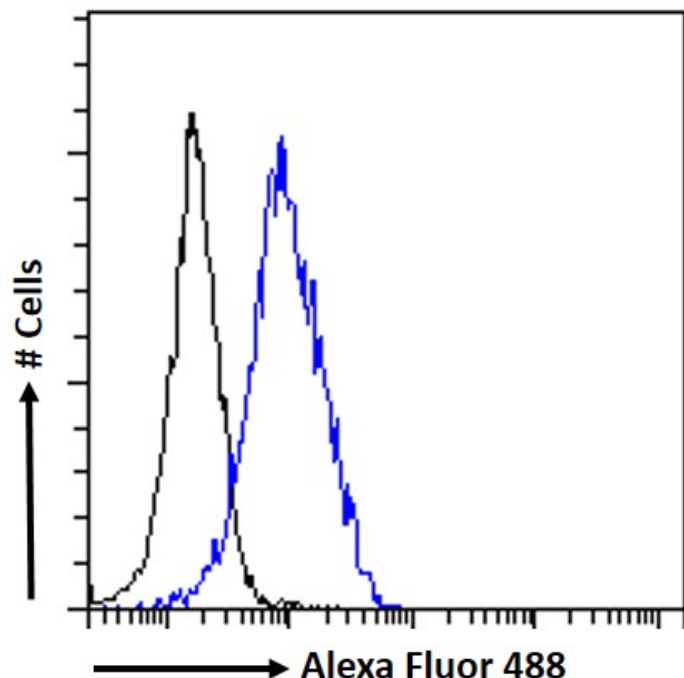


GOAT ANTI-BRSK2 / STK29 ANTIBODY

SKU: EB06981



SPECIFICATIONS

Formulation Supplied at 0.5 mg/ml in Tris saline, 0.02% sodium azide, pH7.3 with 0.5% bovine serum albumin.

Unit Size 100 µg

Storage Instructions Aliquot and store at -20°C. Minimize freezing and thawing.

Synonym / Alias Names serine/threonine kinase SAD-A|protein kinase SAD1B|FLJ41362|chromosome 11 open reading frame 7|chromosome 11 open reading frame 7|homolog of SAD-1 (C. elegans)|serine/threonine kinase 29|BR serine/threonine kinase 2|C11orf7|PEN11B|STK29|SAD1|BRSK2

Usage Summary **Immunofluorescence:** Strong expression of the protein seen in the ER/Golgi and cytoplasm of U2OS cells. Recommended concentration: 10µg/ml. **Flow Cytometry:** Flow cytometric analysis of U2OS cells. Recommended concentration: 10ug/ml.

Accession ID NP_003948.2; NP_001243556.1; NP_001243558.1; NP_001243559.1; NP_001269147.1

Blocking Peptide EBP06981

Immunogen	Peptide with sequence CPEVIRGEKYDGRKAD, from the internal region of the protein sequence according to NP_003948.2; NP_001243556.1; NP_001243558.1; NP_001243559.1; NP_001269147.1.
Peptide Sequence	CPEVIRGEKYDGRKAD
Purification Method	Purified from goat serum by ammonium sulphate precipitation followed by antigen affinity chromatography using the immunizing peptide.
Shipping Instructions	Refrigerated
Predicted Species	Human, Mouse, Rat, Dog, Cow
Reactive Species	Human
Human Gene ID	9024
Mouse Gene ID	75770
Rat Gene ID	293631
Product Grade	https://prod-vector-labs-pimcore-assets.s3.us-east-1.amazonaws.com/assets/products/image/elite_medium.png
ELISA	
Detection Limit	Antibody detection limit dilution 1:8000.
Application Type	Pep-ELISA, FC, IF

DOCUMENTS

- [Data Sheet](#)

GALLERY IMAGES

