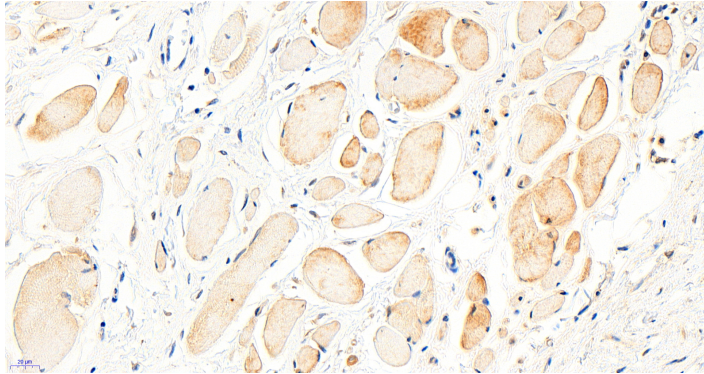


GOAT ANTI-BTRC / FWD1 ANTIBODY

SKU: EB06199



SPECIFICATIONS

Formulation Supplied at 0.5 mg/ml in Tris saline, 0.02% sodium azide, pH7.3 with 0.5% bovine serum albumin.

Unit Size 100 µg

Storage Instructions Aliquot and store at -20°C. Minimize freezing and thawing.

Synonym / Alias Names plkappaBalpha-E3 receptor subunit| beta-TrCP1| OTTHUMP00000020315| OTTHUMP00000020314| F-box/WD repeat-containing protein 1A| F-box and WD-repeat protein 1B| F-box and WD repeats protein beta-TrCP| E3RSIkappaB| betaTrCP| bTrCP1| bTrCP| MGC4643| FWD1| FBXW1A| FBXW1| FBW1A| BETA-TRCP| RP11-529I10.2| beta-transducin repeat containing|BTRC

Accession ID NP_378663.1; NP_003930.1; NP_001243785.1

Blocking Peptide EBP06199

Immunogen Peptide with sequence DPAAVLQEKALK-C, from the N Terminus of the protein sequence according to NP_378663.1; NP_003930.1; NP_001243785.1.

Product Comments This antibody is expected to recognise both reported isoforms (NP_378663.1; NP_003930.1).

Peptide Sequence DPAAVLQEKALK-C

Purification Method Purified from goat serum by ammonium sulphate precipitation followed by antigen affinity chromatography using the immunizing peptide.

Shipping Instructions Refrigerated

Predicted Species Human, Mouse, Rat, Pig, Cow

Reactive Species	Human
Human Gene ID	8945
Mouse Gene ID	12234
Rat Gene ID	361765
Product Grade	https://prod-vector-labs-pimcore-assets.s3.us-east-1.amazonaws.com/assets/products/image/elite_medium.png
IHC Results	Paraffin embedded Human Heart. Recommended concentration: 7.5µg/ml.
ELISA Detection Limit	Antibody detection limit dilution 1:128000.
Western Blot	Approx 65kDa band observed in nuclear lysates of cell line HeLa (calculated MW of 65kDa according to NP_003930.1 and 68.5kDa according to NP_001243785.1. Recommended concentration: 1-3µg/ml. Primary incubation was 1 hour.
Application Type	Pep-ELISA, WB, IHC

DOCUMENTS

- [Data Sheet](#)

GALLERY IMAGES

