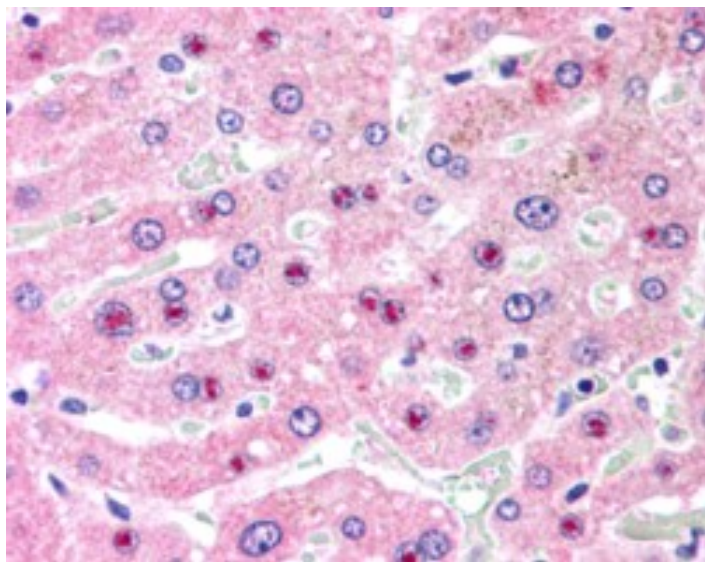


GOAT ANTI-C14ORF68 ANTIBODY

SKU: EB07604



SPECIFICATIONS

Formulation	Supplied at 0.5 mg/ml in Tris saline, 0.02% sodium azide, pH7.3 with 0.5% bovine serum albumin.
Unit Size	100 µg
Storage Instructions	Aliquot and store at -20°C. Minimize freezing and thawing.
Synonym / Alias Names	C14orf68 chromosome 14 open reading frame 68 HDMCP HMFN1655 hepatocellular carcinoma-downregulated mitochondrial carrier protein
Accession ID	NP_997000.2
Blocking Peptide	EBP07604
Immunogen	Peptide with sequence C-RYGNPDAKPTKAD, from the internal region of the protein sequence according to NP_997000.2.
Peptide Sequence	C-RYGNPDAKPTKAD
Purification Method	Purified from goat serum by ammonium sulphate precipitation followed by antigen affinity chromatography using the immunizing peptide.
Shipping Instructions	Refrigerated

Predicted Species	Human
Reactive Species	Human
Human Gene ID	283600
Product Grade	https://prod-vector-labs-pimcore-assets.s3.us-east-1.amazonaws.com/assets/products/image/elite_medium.png
IHC Results	In paraffin embedded Human Liver shows staining of nucleoli in select hepatocytes. Recommended concentration, 2.5µg/ml.
ELISA Detection Limit	Antibody detection limit dilution 1:16000.
Western Blot	Preliminary experiments gave an approx 45kDa band in Human Liver lysates after 0.3µg/ml antibody staining. Please note that currently we cannot find an explanation in the literature for the band we observe given the calculated size of 33.4kDa according to NP_997000.2. The 45kDa band was successfully blocked by incubation with the immunizing peptide. We would appreciate any feedback from people in the field - have any results been reported with other antibodies/lysates? Have any further splice variants/modified forms been reported?
Application Type	Pep-ELISA, IHC

DOCUMENTS

- [Data Sheet](#)

GALLERY IMAGES

