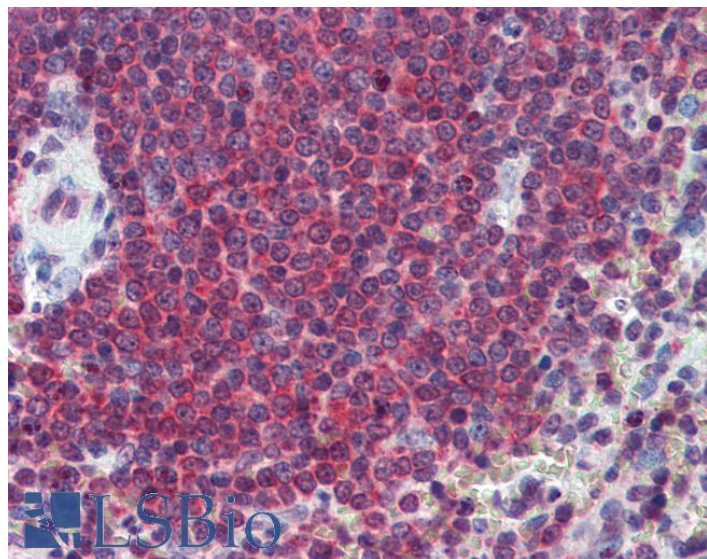


GOAT ANTI-CA1 ANTIBODY

SKU: EB09544



SPECIFICATIONS

Formulation Supplied at 0.5 mg/ml in Tris saline, 0.02% sodium azide, pH7.3 with 0.5% bovine serum albumin.

Unit Size 100 µg

Storage Instructions Aliquot and store at -20°C. Minimize freezing and thawing.

Synonym /

Alias carbonic dehydratase[Car1]|carbonic anhydrase I|CA1

Names

Accession ID NP_001729.1

Blocking Peptide EBP09544

Immunogen Peptide with sequence C-QAIKTKGKRAP, from the internal region of the protein sequence according to NP_001729.1.

Product Comments Reported variants represent identical protein: NP_001729.1, NP_001122303.1, NP_001122302.1, NP_001122301.1.

Peptide Sequence C-QAIKTKGKRAP

Purification Method Purified from goat serum by ammonium sulphate precipitation followed by antigen affinity chromatography using the immunizing peptide.

Shipping Instructions	Refrigerated
Predicted Species	Human, Mouse, Rat
Reactive Species	Human
Human Gene ID	759
Mouse Gene ID	12346
Rat Gene ID	310218
Product Grade	https://prod-vector-labs-pimcore-assets.s3.us-east-1.amazonaws.com/assets/products/image/elite_medium.png
IHC Results	Paraffin embedded Human Spleen. Recommended concentration: 2.5µg/ml.
ELISA	
Detection Limit	Antibody detection limit dilution 1:64000.
Western Blot	Approx 29kDa band observed in Human Liver lysates (calculated MW of 28.9kDa according to NP_001729.1. Recommended concentration: 0.03-0.1µg/ml. Primary incubation was 1 hour.
Application Type	Pep-ELISA, WB, IHC

DOCUMENTS

- [Data Sheet](#)

GALLERY IMAGES

