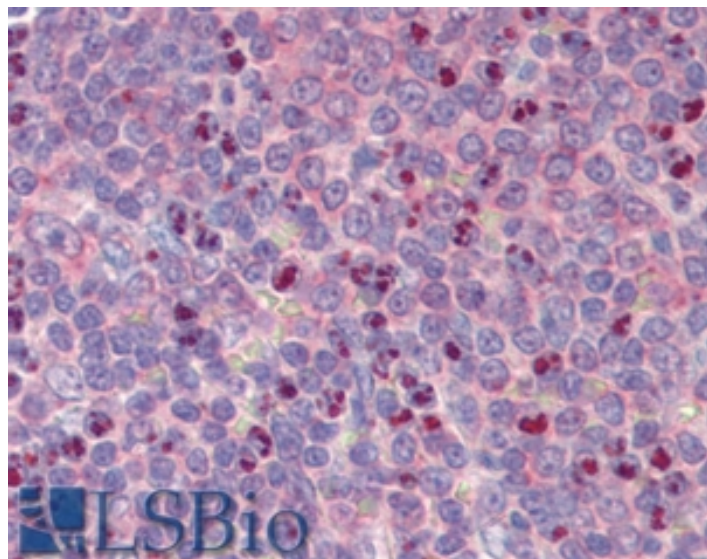


## GOAT ANTI-CAD / CPS2 ANTIBODY

**SKU:** EB09418



---

## SPECIFICATIONS

**Formulation** Supplied at 0.5 mg/ml in Tris saline, 0.02% sodium azide, pH7.3 with 0.5% bovine serum albumin.

**Unit Size** 100 µg

**Storage Instructions** Aliquot and store at -20°C. Minimize freezing and thawing.

**Synonym / Alias** multifunctional protein CAD|carbamoylphosphate synthetase 2/aspartate

**Names** transcarbamylase/dihydroorotase|CAD trifunctional protein|carbamoyl-phosphate synthetase 2, aspartate

transcarbamylase, and dihydroorotase|CAD

**Accession ID** NP\_004332.2

**Blocking Peptide** EBP09418

**Immunogen** Peptide with sequence C-DTRELTKKLREQ, from the internal region of the protein sequence according to NP\_004332.2.

**Peptide Sequence** C-DTRELTKKLREQ

**Purification Method** Purified from goat serum by ammonium sulphate precipitation followed by antigen affinity chromatography using the immunizing peptide.

**Shipping Instructions** Refrigerated

<b>Predicted Species</b>	Human, Mouse, Rat
<b>Reactive Species</b>	Human
<b>Human Gene ID</b>	790
<b>Mouse Gene ID</b>	69719
<b>Rat Gene ID</b>	24240
<b>Product Grade</b>	<a href="https://prod-vector-labs-pimcore-assets.s3.us-east-1.amazonaws.com/assets/products/image/elite_medium.png">https://prod-vector-labs-pimcore-assets.s3.us-east-1.amazonaws.com/assets/products/image/elite_medium.png</a>
<b>IHC Results</b>	In paraffin embedded Human Spleen shows nuclear staining in selected cells. Recommended concentration, 5-15µg/ml.
<b>ELISA</b>	
<b>Detection Limit</b>	Antibody detection limit dilution 1:32000.
<b>Application Type</b>	Pep-ELISA, IHC

## DOCUMENTS

- [Data Sheet](#)

## GALLERY IMAGES

