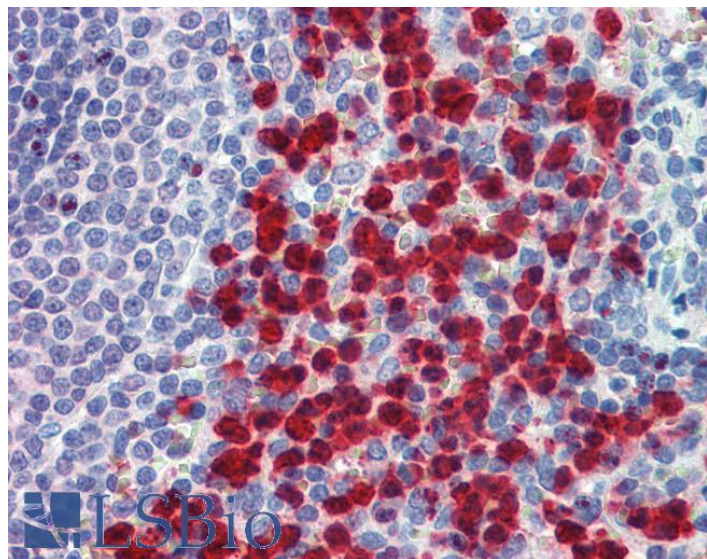


# GOAT ANTI-CADM4 (C TERMINUS) ANTIBODY

**SKU:** EB08194



## SPECIFICATIONS

**Formulation** Supplied at 0.5 mg/ml in Tris saline, 0.02% sodium azide, pH7.3 with 0.5% bovine serum albumin.

**Unit Size** 100 µg

**Storage Instructions** Aliquot and store at -20°C. Minimize freezing and thawing.

**Synonym / Alias Names** CADM4|cell adhesion molecule 4|IGSF4C|Nect-4|TSLL2|synCAM4|TSLC1-like 2|immunoglobulin superfamily, member 4C|nectin-like 4

**Accession ID** NP\_660339.1

**Blocking Peptide** EBP08194

**Immunogen** Peptide with sequence C-REAFLNGSDGHRKE, from the C Terminus of the protein sequence according to NP\_660339.1.

**Peptide Sequence** C-REAFLNGSDGHRKE

**Purification Method** Purified from goat serum by ammonium sulphate precipitation followed by antigen affinity chromatography using the immunizing peptide.

**Shipping Instructions** Refrigerated

<b>Predicted Species</b>	Human, Mouse, Rat, Dog
<b>Reactive Species</b>	Human
<b>Human Gene ID</b>	199731
<b>Product Grade</b>	<a href="https://prod-vector-labs-pimcore-assets.s3.us-east-1.amazonaws.com/assets/products/image/elite_medium.png">https://prod-vector-labs-pimcore-assets.s3.us-east-1.amazonaws.com/assets/products/image/elite_medium.png</a>
<b>IHC Results</b>	Paraffin embedded Human Spleen and Liver. Recommended concentration: 2.5µg/ml.
<b>ELISA</b>	
<b>Detection Limit</b>	Antibody detection limit dilution 1:32000.
<b>Western Blot</b>	Approx 70kDa band observed in Human Brain (Cerebellum) lysates (calculated MW of 42.8kDa according to NP_660339.1). The observed molecular weight corresponds to findings with EB08040, a product of different design reacting to a different part of the same protein. Recommended concentration: 0.03-0.1µg/ml. Primary incubation was 1 hour.
<b>Application Type</b>	Pep-ELISA, WB, IHC

## DOCUMENTS

- [Data Sheet](#)

## GALLERY IMAGES

