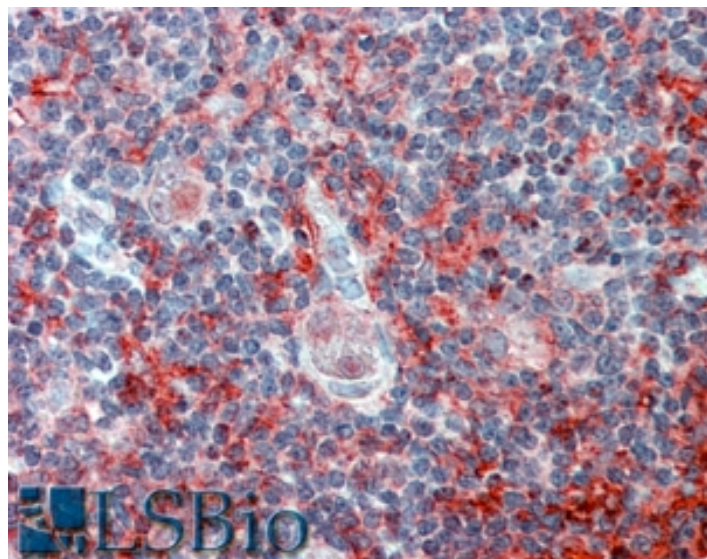


GOAT ANTI-CADM4 (INTERNAL) ANTIBODY

SKU: EB08040



SPECIFICATIONS

Formulation Supplied at 0.5 mg/ml in Tris saline, 0.02% sodium azide, pH7.3 with 0.5% bovine serum albumin.

Unit Size 100 µg

Storage Instructions Aliquot and store at -20°C. Minimize freezing and thawing.

Synonym / Alias Names nectin-like 4|immunoglobulin superfamily, member 4C|TSLC1-like 2|synCAM4|TSL2|Nect-4|IGSF4C|cell adhesion molecule 4|CADM4

Accession ID NP_660339.1

Blocking Peptide EBP08040

Immunogen Peptide with sequence C-KDERFQLEEF, from the internal region of the protein sequence according to NP_660339.1.

Peptide Sequence C-KDERFQLEEF

Purification Method Purified from goat serum by ammonium sulphate precipitation followed by antigen affinity chromatography using the immunizing peptide.

Shipping Instructions Refrigerated

Predicted Species	Human, Mouse, Rat
Reactive Species	Human
Human Gene ID	199731
Mouse Gene ID	260299
Product Grade	https://prod-vector-labs-pimcore-assets.s3.us-east-1.amazonaws.com/assets/products/image/elite_medium.png
IHC Results	Paraffin embedded Human Thymus and Skeletal Muscle. Recommended concentration: 2.5µg/ml.
ELISA	
Detection Limit	Antibody detection limit dilution 1:16000.
Western Blot	Approx 70kDa band observed in Human Brain (Cerebellum) lysates (calculated MW of 42.8kDa according to NP_660339.1). The observed molecular weight corresponds to findings with EB08194, a product of different design reacting to a different part of the same protein. Recommended concentration: 0.1-0.3µg/ml. Primary incubation was 1 hour.
Application Type	Pep-ELISA, WB, IHC

DOCUMENTS

- [Data Sheet](#)

GALLERY IMAGES

