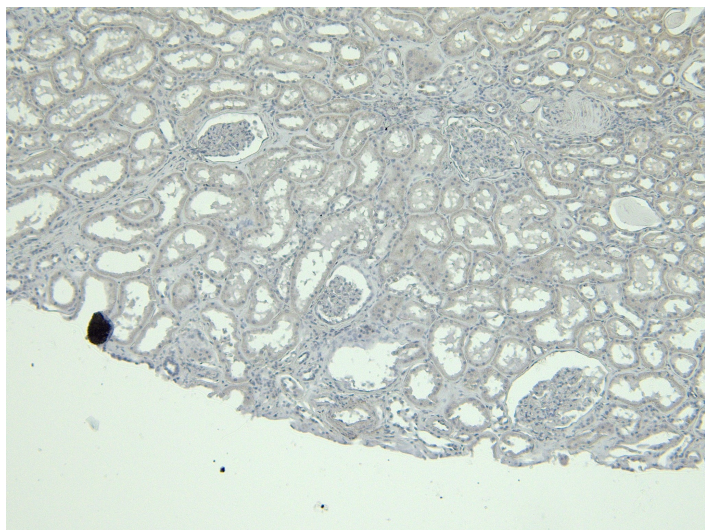


GOAT ANTI-CALBINDIN D28 ANTIBODY

SKU: EB11759



SPECIFICATIONS

Formulation Supplied at 0.5 mg/ml in Tris saline, 0.02% sodium azide, pH7.3 with 0.5% bovine serum albumin.

Unit Size 100 µg

Storage Instructions Aliquot and store at -20°C. Minimize freezing and thawing.

Synonym / Alias Names vitamin D-dependent calcium-binding protein, avian-type|RTVL-H protein|OTTHUMP00000225441|OTTHUMP00000166027|D-28K|calbindin D28|calbindin 1, 28kDa|calbindin 1, (28kD)|calbindin|CALB1|CALB

Accession ID NP_004920.1

Blocking Peptide EBP11759

Immunogen Peptide with sequence C-KTFVDQYGQRDDGK, from the internal region of the protein sequence according to NP_004920.1.

Product Comments Immunizing peptide overlaps EF hand 2, but not any calcium binding site.

Peptide Sequence C-KTFVDQYGQRDDGK

Purification Method Purified from goat serum by ammonium sulphate precipitation followed by antigen affinity chromatography using the immunizing peptide.

Shipping Instructions	Refrigerated
Predicted Species	Human, Rat, Dog, Pig, Cow
Reactive Species	Human, Rat
Human Gene ID	793
Rat Gene ID	83839
Product Grade	https://prod-vector-labs-pimcore-assets.s3.us-east-1.amazonaws.com/assets/products/image/elite_medium.png
IHC Results	Paraffin embedded Human Kidney. Recommended concentration: 5-7µg/ml.
ELISA	
Detection Limit	Antibody detection limit dilution 1:128000.
Western Blot	Approx. 26kDa band observed in Human and Rat Kidney lysates and in Rat Brain lysates (calculated MW of 30.0kDa according to Human NP_004920.1 and Rat NP_114190.1). The observed molecular weight is routinely observed by other sources. Recommended concentration: 0.1-0.3µg/ml. Primary incubation 1 hour at room temperature.
Application Type	Pep-ELISA, WB, IHC

SELECTED REFERENCES

[{"pmid": 0, "intro": "**This antibody (previous batch) has been successfully used in the following paper:**", "title": "Comparative Renal Development between Spiny Mouse (Acomys cahirinus) and House Mouse (Mus musculus)", "author": "Azad, Tanzina", "journal": "http://hdl.handle.net/10138/594531 (2025)"}]

DOCUMENTS

- [Data Sheet](#)

GALLERY IMAGES

