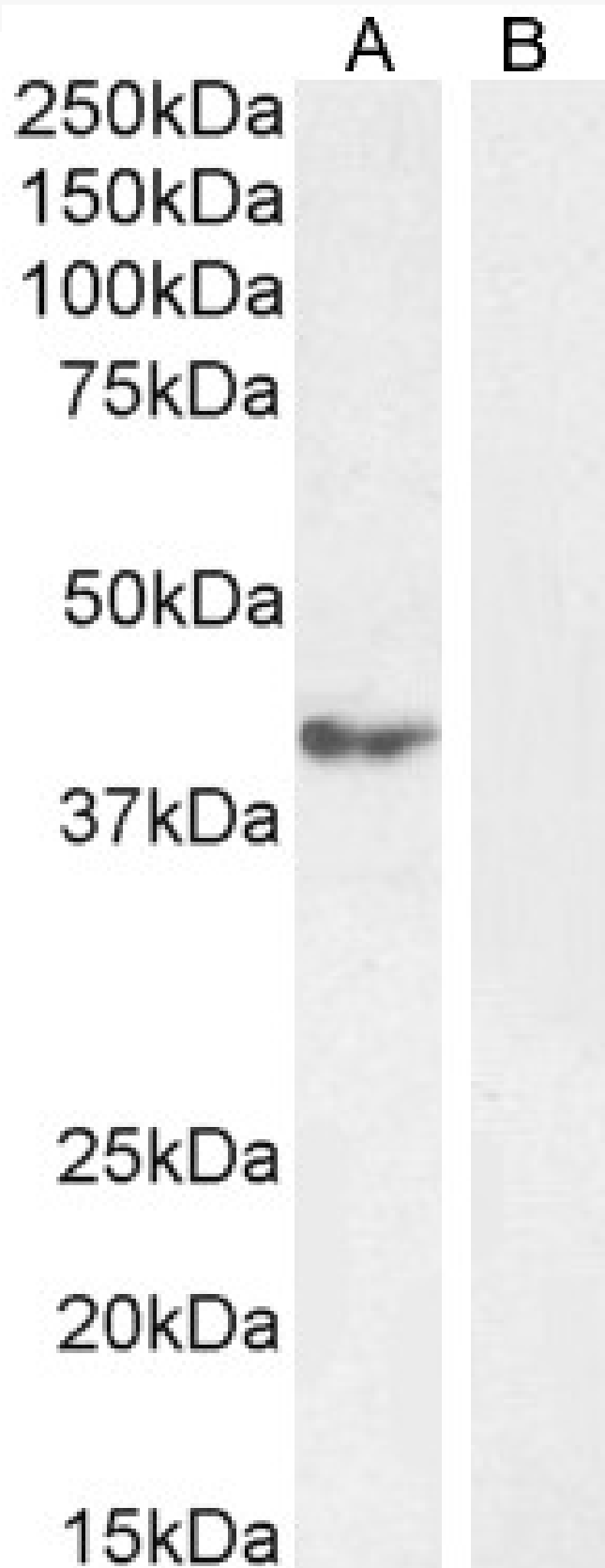


GOAT ANTI-CALCIPRESSIN-1 ANTIBODY

SKU: EB10693



SPECIFICATIONS

Formulation	Supplied at 0.5 mg/ml in Tris saline, 0.02% sodium azide, pH7.3 with 0.5% bovine serum albumin.
Unit Size	100 µg
Storage	
Instructions	Aliquot and store at -20°C. Minimize freezing and thawing.
Synonym /	calcium and calcipressin-1 OTTHUMP00000214670 OTTHUMP00000214669 OTTHUMP00000108622
Alias	OTTHUMP00000108621 Down syndrome candidate region 1 RCN1 MCIP1 DSCR1 DSC1 CSP1 ADAPT78
Names	regulator of calcineurin 1 RCAN1
Usage	Immunofluorescence: Strong expression of the protein seen in the cytoplasm of A431 and U2OS
Summary	cells. Recommended concentration: 10µg/ml. <p>Flow Cytometry: Flow cytometric analysis of A431 cells. Recommended concentration: 10ug/ml.</p>
Accession ID	NP_004405.3; NP_981962.1; NP_981963.1; NP_001272320.2; NP_001272318.1; NP_001317945.1
Blocking Peptide	EBP10693
Immunogen	Peptide with sequence C-HIGSSHLAPPND, from the internal region of the protein sequence according to NP_004405.3; NP_981962.1; NP_981963.1; NP_001272320.2; NP_001272318.1; NP_001317945.1.
Product Comments	This antibody is expected to recognize all reported isoforms a to f.
Peptide Sequence	C-HIGSSHLAPPND
Purification Method	Purified from goat serum by ammonium sulphate precipitation followed by antigen affinity chromatography using the immunizing peptide.
Shipping Instructions	Refrigerated
Predicted Species	Human, Mouse, Rat, Dog, Cow
Reactive Species	Human, Mouse
Human Gene ID	1827
Mouse Gene ID	54720
Rat Gene ID	266766
Product Grade	https://prod-vector-labs-pimcore-assets.s3.us-east-1.amazonaws.com/assets/products/image/elite_plus_medium.png
ELISA	
Detection Limit	Antibody detection limit dilution 1:32000.

**Western
Blot**

Approx. 40kDa band was observed in Human Cerebellum lysates (calculated MW of 31.9kDa according to NP_001272320.2). This molecular weight is observed by other commercial sources, and was blocked by incubation with the immunizing peptide. Recommended concentration: 1-1.5ug/ml. Primary incubation 1 hour at room temperature. Approx. 40kDa band corresponding to isoform 1L, was observed in Wild-type Mouse Brain lysates, which is not present in the KO mouse. Additional 55kDa bands were consistently observed in both the WT and KO Mouse, and are therefore a non-specific signal. Recommended concentration: 1-3µg/ml. Primary incubation 1 hour at room temperature. Data kindly provided by Dana Crawford, PhD, Albany Medical College, NY, USA.

**Application
Type**

Pep-ELISA, WB, IF, FC

DOCUMENTS

- [Data Sheet](#)

GALLERY IMAGES

