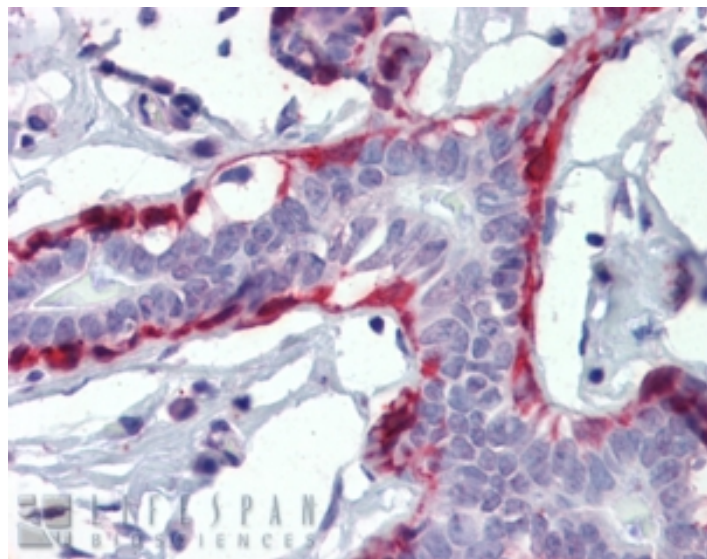


GOAT ANTI-CALPONIN 1 / CNN1 ANTIBODY

SKU: EB09515



SPECIFICATIONS

Formulation	Supplied at 0.5 mg/ml in Tris saline, 0.02% sodium azide, pH7.3 with 0.5% bovine serum albumin.
Unit Size	100 µg
Storage Instructions	Aliquot and store at -20°C. Minimize freezing and thawing.
Synonym / Alias Names	calponins, basic Sm-Calp SMCC calponin 1, basic, smooth muscle CNN1
Accession ID	NP_001290.2
Blocking Peptide	EBP09515
Immunogen	Peptide with sequence C-KRQIFEPGLGMEH, from the internal region (near C Terminus) of the protein sequence according to NP_001290.2.
Peptide Sequence	C-KRQIFEPGLGMEH
Purification Method	Purified from goat serum by ammonium sulphate precipitation followed by antigen affinity chromatography using the immunizing peptide.
Shipping Instructions	Refrigerated

Predicted Species	Human, Mouse, Rat, Dog, Cow
Reactive Species	Human
Human Gene ID	1264
Mouse Gene ID	12797
Rat Gene ID	65204
Product Grade	https://prod-vector-labs-pimcore-assets.s3.us-east-1.amazonaws.com/assets/products/image/elite_medium.png
IHC Results	In paraffin embedded Human Breast shows staining of myoepithelial cells surroundig the ductal lining. Recommended concentration, 3-6µg/ml.
ELISA	
Detection Limit	Antibody detection limit dilution 1:32000.
Application Type	Pep-ELISA, IHC

DOCUMENTS

- [Data Sheet](#)

GALLERY IMAGES

