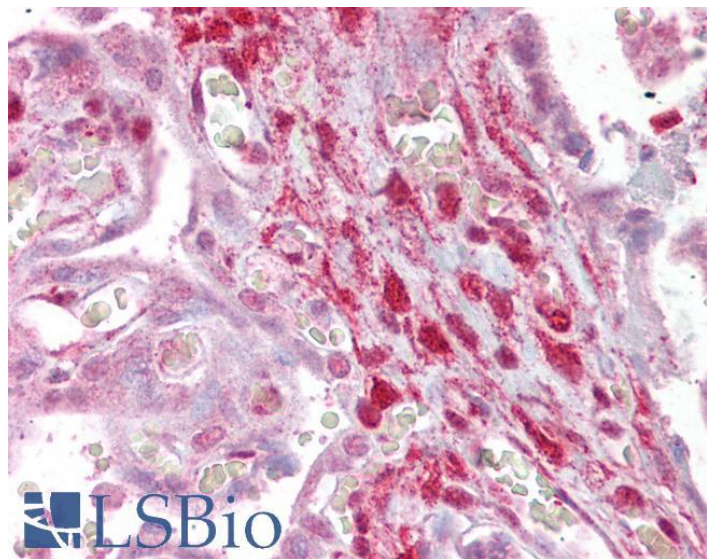


# GOAT ANTI-CALPONIN 2 / CNN2 ANTIBODY

**SKU:** EB09568



## SPECIFICATIONS

**Formulation** Supplied at 0.5 mg/ml in Tris saline, 0.02% sodium azide, pH7.3 with 0.5% bovine serum albumin.

**Unit Size** 100 µg

**Storage Instructions** Aliquot and store at -20°C. Minimize freezing and thawing.

**Synonym /**

**Alias** neutral calponin|calponin H2, smooth muscle|calponin 2|CNN2

**Names**

**Accession ID** NP\_004359.1; NP\_958434.1

**Blocking Peptide** EBP09568

**Immunogen** Peptide with sequence C-DPGEVPEYPPYYQEE, from the internal region (near C Terminus) of the protein sequence according to NP\_004359.1; NP\_958434.1.

**Product Comments** This antibody is expected to recognize both reported isoforms (NP\_004359.1; NP\_958434.1), but it is not expected to cross-react with CCN3.

**Peptide Sequence** C-DPGEVPEYPPYYQEE

**Purification Method** Purified from goat serum by ammonium sulphate precipitation followed by antigen affinity chromatography using the immunizing peptide.

<b>Shipping Instructions</b>	Refrigerated
<b>Predicted Species</b>	Human
<b>Reactive Species</b>	Human
<b>Human Gene ID</b>	1265
<b>Product Grade</b>	<a href="https://prod-vector-labs-pimcore-assets.s3.us-east-1.amazonaws.com/assets/products/image/elite_medium.png">https://prod-vector-labs-pimcore-assets.s3.us-east-1.amazonaws.com/assets/products/image/elite_medium.png</a>
<b>IHC Results</b>	Paraffin embedded Human Placenta. Recommended concentration: 2.5µg/ml.
<b>ELISA</b>	
<b>Detection Limit</b>	Antibody detection limit dilution 1:32000.
<b>Western Blot</b>	Approx 35kDa band observed in lysates of cell line HepG2 (calculated MW of 33.7kDa according to NP_004359.1). Recommended concentration: 0.03-0.1µg/ml. Primary incubation was 1 hour.
<b>Application Type</b>	Pep-ELISA, WB, IHC

## DOCUMENTS

- [Data Sheet](#)

## GALLERY IMAGES

