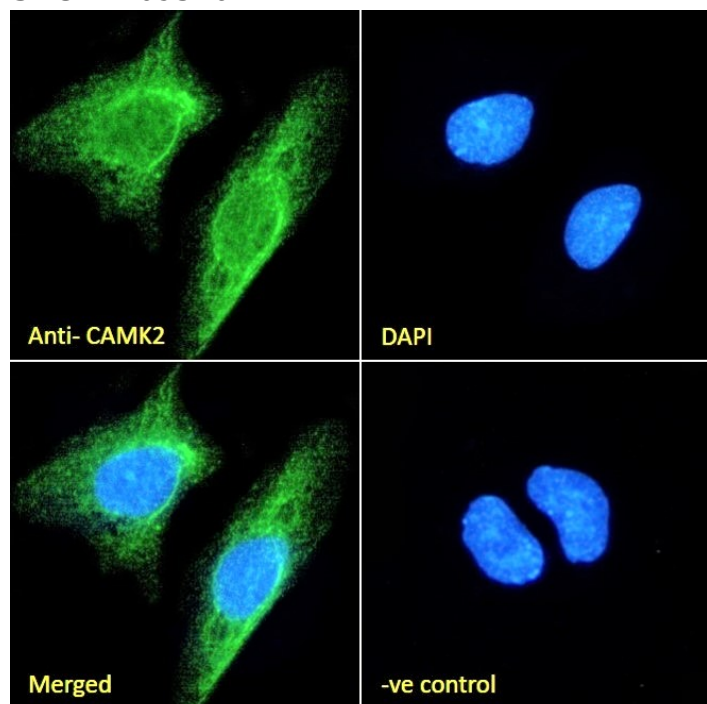


GOAT ANTI-CAMK2 ANTIBODY

SKU: EB09376



SPECIFICATIONS

Formulation	Supplied at 0.5 mg/ml in Tris saline, 0.02% sodium azide, pH7.3 with 0.5% bovine serum albumin.
Unit Size	100 µg
Storage	Aliquot and store at -20°C. Minimize freezing and thawing.
Instructions	calcium/calmodulin-dependent protein kinase type II alpha chain calcium/calmodulin-dependent protein kinase IIA calcium/calmodulin-dependent protein kinase II alpha-B
Synonym / Alias	subunit OTTHUMP00000165788 OTTHUMP00000165787 CaMK-II alpha subunit CaM-kinase II alpha chain CaM
Names	kinase II alpha subunit KIAA0968 CAMKA calcium/calmodulin-dependent protein kinase (CaM kinase) II alpha CAMK2A
Usage Summary	<p>Immunofluorescence: Strong expression of the protein seen in the cytoplasm of Neuro2a cells.</p> <p>Recommended concentration: 10µg/ml. Flow Cytometry: Flow cytometric analysis of Neuro2a cells. Recommended concentration: 10ug/ml.</p>
Accession ID	NP_057065.2; NP_001280099.1

Blocking Peptide	EBP09376
Immunogen	Peptide with sequence C-PRTAQSEETRVWHR, from the internal region of the protein sequence according to NP_057065.2; NP_001280099.1.
Product Comments	This antibody is expected to recognize both reported isoforms (NP_057065.2 (CAMK2A) and NP_001280099.1 (CAMK2B)).
Peptide Sequence	C-PRTAQSEETRVWHR
Purification Method	Purified from goat serum by ammonium sulphate precipitation followed by antigen affinity chromatography using the immunizing peptide.
Shipping Instructions	Refrigerated
Predicted Species	Human, Mouse, Rat
Reactive Species	Human, Mouse, Rat
Human Gene ID	815, 816
Mouse Gene ID	12322
Rat Gene ID	25400
Product Grade	https://prod-vector-labs-pimcore-assets.s3.us-east-1.amazonaws.com/assets/products/image/elite_plus_medium.png
ELISA Detection Limit	Antibody detection limit dilution 1:128000.
Western Blot	Approx 48-50+60kDa bands observed in Human Cerebral Cortex and Mouse and Rat Brain lysates, corresponding to CAMK2alpha and CAMK2beta respectively and approx. 60kDa in Human Cerebellum lysates (calculated MW of 55.3kDa according to Human NP_057065.2 and 54.1kDa according to Mouse NP_001390241.1 and Rat NP_037052.1 subunit Alpha and 60.4kDa according to Human NP_001280099.1, Mouse NP_031621.3 and Rat NP_068507.2 subunit beta). These molecular weights are routinely observed by other sources, and were successfully blocked by incubation with the immunizing peptide. Recommended concentration 0.1-1ug/ul. Primary incubation 1 hour at room temperature.
Application Type	Pep-ELISA, WB, IF, FC

DOCUMENTS

- [Data Sheet](#)

GALLERY IMAGES

