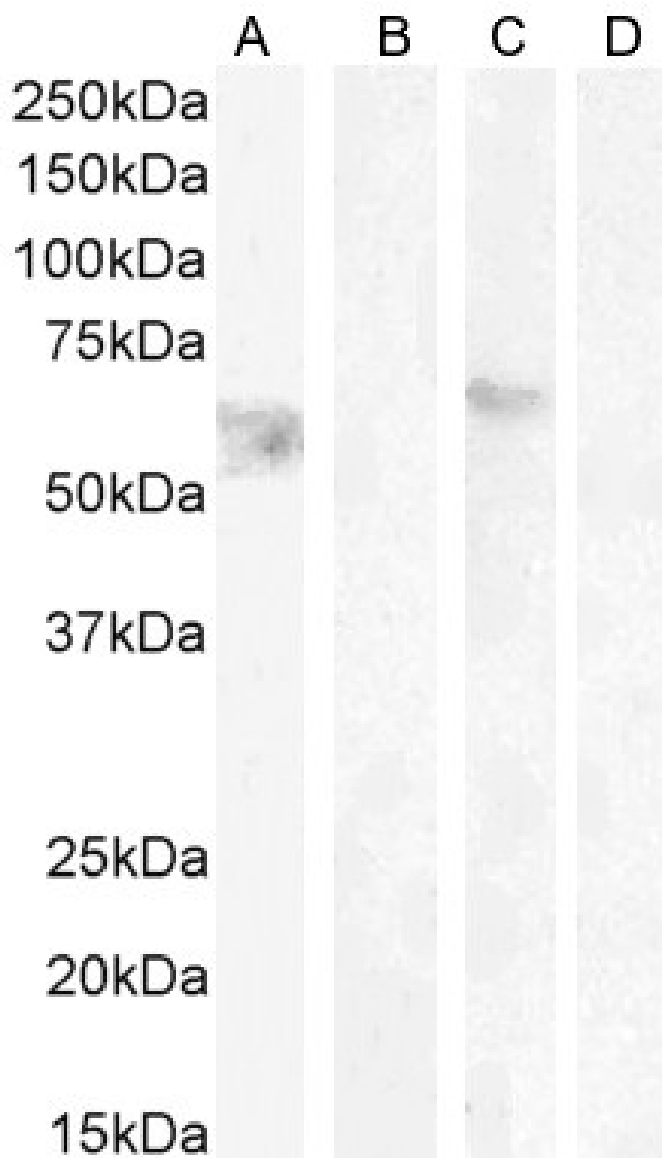


GOAT ANTI-CANNABINOID RECEPTOR 1 ANTIBODY

SKU: EB06945



SPECIFICATIONS

Formulation Supplied at 0.5 mg/ml in Tris saline, 0.02% sodium azide, pH7.3 with 0.5% bovine serum albumin.

Unit Size	100 µg
Storage Instructions	Aliquot and store at -20°C. Minimize freezing and thawing.
Synonym / Alias Names	cannabinoid receptor 1 OTTHUMP00000016839 OTTHUMP00000016838 CB1R RP1-23D17.1 central cannabinoid receptor HGNC:2159, CANN6, CB-R, CB1, CB1A, CB1K5, CNR CNR1 cannabinoid receptor 1 (brain)
Accession ID	NP_057167.2; NP_001153732.1; NP_001153731.1; NP_001153730.1; NP_001153698.1; NP_149421.1
Blocking Peptide	EBP06945
Immunogen	Peptide with sequence C-HTSEdGKVQVTRPDQ, from the internal region of the protein sequence according to NP_057167.2; NP_001153732.1; NP_001153731.1; NP_001153730.1; NP_001153698.1; NP_149421.1.
Product Comments	This antibody is expected to recognise both reported isoforms. Isoform a (NP_057167.2; NP_001153732.1; NP_001153731.1; NP_001153730.1; NP_001153698.1) and isoform b (NP_149421.1).
Peptide Sequence	C-HTSEdGKVQVTRPDQ
Purification Method	Purified from goat serum by ammonium sulphate precipitation followed by antigen affinity chromatography using the immunizing peptide.
Shipping Instructions	Refrigerated
Predicted Species	Human, Mouse, Rat, Dog
Reactive Species	Human
Human Gene ID	1268
Mouse Gene ID	12801
Rat Gene ID	25248
Product Grade	https://prod-vector-labs-pimcore-assets.s3.us-east-1.amazonaws.com/assets/products/image/elite_medium.png
ELISA Detection Limit	Antibody detection limit dilution 1:32000.
Western Blot	Approx 55kDa (non-glycosylated) and 65kDa (glycosylated) bands observed in lysates of cell line HeLa (calculated MW of 52.9kDa according to NP_057167.2;). Both bands were successfully blocked by incubation with the immunizing peptide, Recommended concentration: 0.5-2µg/ml. Primary incubation 1 hour at room temperature. <p>This antibody has been successfully used in Western blot on Human: Fügedi G et al. (2014) PMID: 25444073.</p>
Application Type	Pep-ELISA, WB

SELECTED REFERENCES

[{"pmid": 25444073, "intro": "**This antibody has been successfully used in Western blot on Human:**", "title": "Increased placental expression of cannabinoid receptor 1 in preeclampsia: an observational study.", "author": "Fügedi G, Molnár M, Rigó J Jr, Schönléber J, Kovalszky I, Molvarec A.", "journal": "BMC Pregnancy Childbirth. 2014 Dec 2;14:395"}]

DOCUMENTS

- [Data Sheet](#)

GALLERY IMAGES

