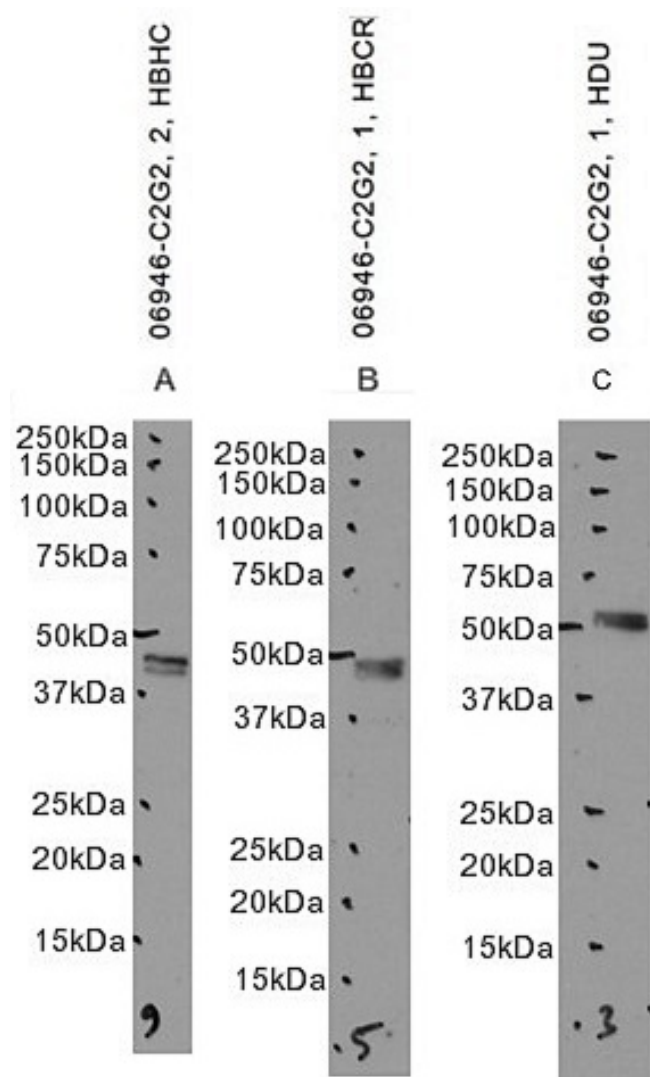


GOAT ANTI-CANNABINOID RECEPTOR 2 ANTIBODY

SKU: EB06946



SPECIFICATIONS

Formulation	Supplied at 0.5 mg/ml in Tris saline, 0.02% sodium azide, pH7.3 with 0.5% bovine serum albumin.
Unit Size	100 µg
Storage	Aliquot and store at -20°C. Minimize freezing and thawing.
Instructions	
Synonym / Alias	testis-dominant CNR2 isoform
Names	CB2 RP11-4M23.1 CNR2 OTTHUMP00000044841 CX5 CB2 CNR3 HGNC:2160 cannabinoid receptor 2 (macrophage)
Accession ID	NP_001832.1
Blocking Peptide	EBP06946
Immunogen	Peptide with sequence C-TETeadgKITPWPd, from the C Terminus of the protein sequence according to NP_001832.1.
Peptide Sequence	C-TETeadgKITPWPd
Purification Method	Purified from goat serum by ammonium sulphate precipitation followed by antigen affinity chromatography using the immunizing peptide.
Shipping Instructions	Refrigerated
Predicted Species	Human
Reactive Species	Human
Human Gene ID	1269
Product Grade	https://prod-vector-labs-pimcore-assets.s3.us-east-1.amazonaws.com/assets/products/image/elite_medium.png
IHC Results	Paraffin embedded Human Tonsil. Recommended concentration: 4µg/ml.
ELISA	
Detection Limit	Antibody detection limit dilution 1:32000.
Western Blot	Approx. 40-45kDa doublet band observed in Human Hippocampus lysates, approx. 48kDa in Human Cerebellum lysates, and approx. 50kDa in Human Duodenum lysates (calculated MW of 46.2kDa according to NP_001832.1). Recommended concentration: 1-3µg/ml. Primary incubation 1 hour at room temperature.
Application Type	Pep-ELISA, WB, IHC

SELECTED REFERENCES

[{"pmid": 25444073, "intro": "**This antibody (previous batch) has been successfully used in Western blot on Human:**", "title": "Increased placental expression of cannabinoid receptor 1 in preeclampsia: an observational study.", "author": "Fügedi G, Molnár M, Rigó J Jr, Schönleber J, Kovalszky I, Molvarec A.", "journal": "BMC Pregnancy Childbirth. 2014 Dec 2;14:395"}]

DOCUMENTS

- [Data Sheet](#)

GALLERY IMAGES

