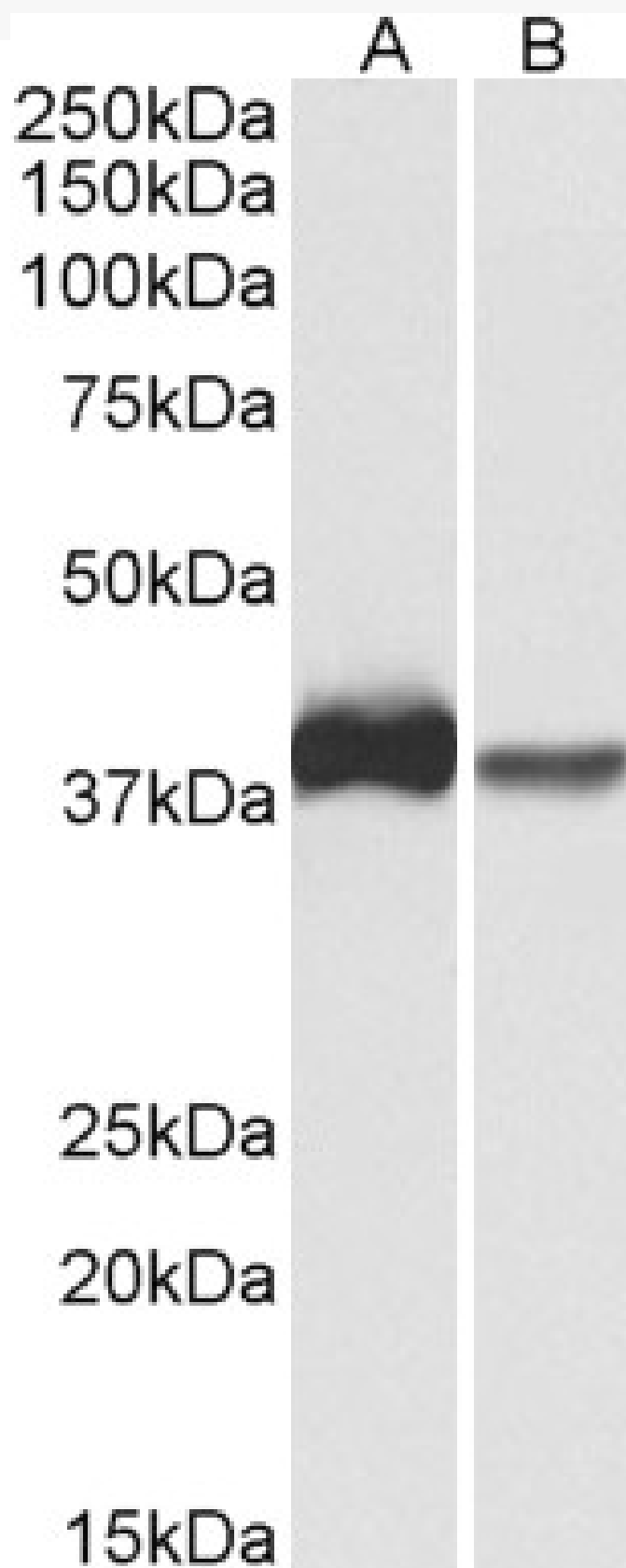


GOAT ANTI-CAPG (AA205-217) ANTIBODY

SKU: EB12422



SPECIFICATIONS

Formulation	Supplied at 0.5 mg/ml in Tris saline, 0.02% sodium azide, pH7.3 with 0.5% bovine serum albumin.
Unit Size	100 µg
Storage Instructions	Aliquot and store at -20°C. Minimize freezing and thawing.
Synonym / Alias Names	CAPG capping protein (actin filament), gelsolin-like AFCP MCP actin regulatory protein CAP-G actin-regulatory protein CAP-G gelsolin-like capping protein macrophage capping protein macrophage-capping protein
Accession ID	NP_001738.2
Blocking Peptide	EBP12422
Immunogen	Peptide with sequence C-KAQVEIVTDGEEP, from the internal region of the protein sequence according to NP_001738.2.
Product Comments	This antibody is expected to recognize isoform 1 (NP_001738.2) only. Reported variants represent identical protein: NP_001243068.1, NP_001738.2.
Peptide Sequence	C-KAQVEIVTDGEEP
Purification Method	Purified from goat serum by ammonium sulphate precipitation followed by antigen affinity chromatography using the immunizing peptide.
Shipping Instructions	Refrigerated
Predicted Species	Human, Dog, Pig
Reactive Species	Human, Mouse, Rat, Pig
Human Gene ID	822
Product Grade	https://prod-vector-labs-pimcore-assets.s3.us-east-1.amazonaws.com/assets/products/image/elite_medium.png
ELISA Detection Limit	Antibody detection limit dilution 1:128000.
Western Blot	Approx 38kDa band observed in lysates of cell line U937 and of Human, Mouse and Rat Spleen (calculated MW of 38.5kDa according to NP_001738.2). In Peripheral Blood Lymphocytes, the observed band runs as ~40kDa. Recommended concentration: 0.1-0.3µg/ml.
Application Type	Pep-ELISA, WB

DOCUMENTS

- [Data Sheet](#)

GALLERY IMAGES

