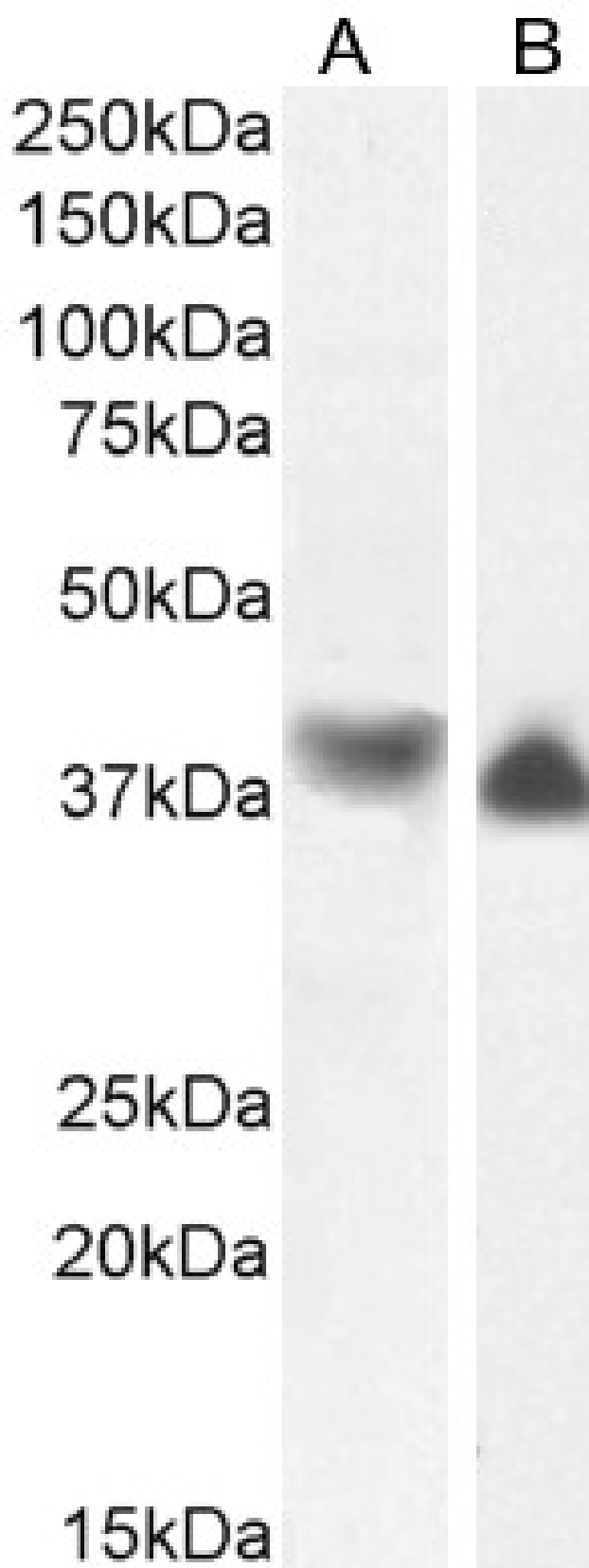


GOAT ANTI-CAPG ANTIBODY

SKU: EB12421



SPECIFICATIONS

Formulation	Supplied at 0.5 mg/ml in Tris saline, 0.02% sodium azide, pH7.3 with 0.5% bovine serum albumin.
Unit Size	100 µg
Storage Instructions	Aliquot and store at -20°C. Minimize freezing and thawing.
Synonym / Alias Names	macrophage-capping protein macrophage capping protein gelsolin-like capping protein actin-regulatory protein CAP-G actin regulatory protein CAP-G MCP AFCP capping protein (actin filament), gelsolin-like CAPG
Usage Summary	<p><p>Flow Cytometry: Flow cytometric analysis of THP-1 cells. Recommended concentration: 10ug/ml.</p></p>
Accession ID	NP_001738.2; NP_001243069.1; NP_001307663.1
Blocking Peptide	EBP12421
Immunogen	Peptide with sequence C-NIRATERALNWDS, from the internal region of the protein sequence according to NP_001738.2; NP_001243069.1; NP_001307663.1.
Product Comments	This antibody is expected to recognize all reported isoform (NP_001738.2; NP_001243069.1, NP_001307663.1. Reported variants represent identical protein: NP_001243068.1, NP_001738.2.
Peptide Sequence	C-NIRATERALNWDS
Purification Method	Purified from goat serum by ammonium sulphate precipitation followed by antigen affinity chromatography using the immunizing peptide.
Shipping Instructions	Refrigerated
Predicted Species	Human, Dog
Reactive Species	Human
Human Gene ID	822
Product Grade	https://prod-vector-labs-pimcore-assets.s3.us-east-1.amazonaws.com/assets/products/image/elite_medium.png
ELISA Detection Limit	Antibody detection limit dilution 1:64000.
Western Blot	Approx. 38kDa band observed in lysates of cell lines THP-1, U937 and A431, and in Human Spleen lysates and approx. 37kDa in Human Tonsil lysates (calculated MW of 38.5kDa according to NP_001738.2 and 36.9kDa according to NP_001243069.1). Recommended concentration: 0.1-0.3µg/ml. Primary incubation 1 hour at room temperature. <p>Positive Control: A batch specific positive control lysate is available for this product. Please contact Sales@everestbiotech.com for availability.</p>
Application Type	Pep-ELISA, WB, FC

DOCUMENTS

- [Data Sheet](#)

GALLERY IMAGES

