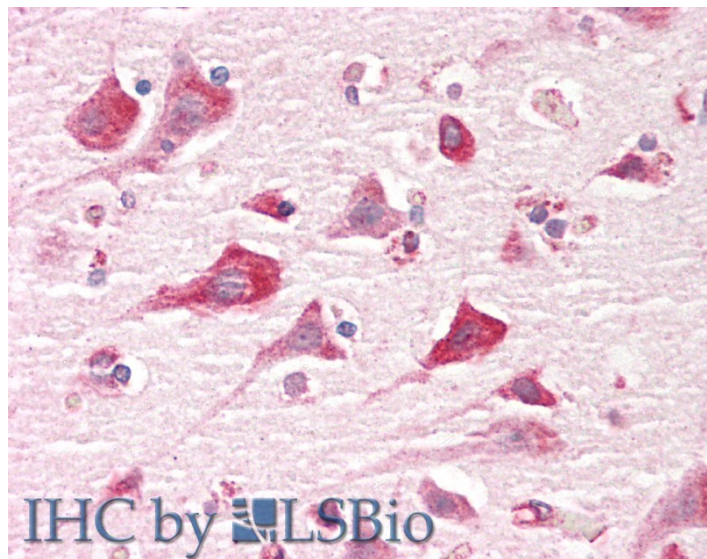


GOAT ANTI-CAPRIN1 ANTIBODY

SKU: EB12638



SPECIFICATIONS

Formulation	Supplied at 0.5 mg/ml in Tris saline, 0.02% sodium azide, pH7.3 with 0.5% bovine serum albumin.
Unit Size	100 µg
Storage Instructions	Aliquot and store at -20°C. Minimize freezing and thawing.
Synonym / Alias	cell cycle caprin-1 caprin 1 activation/proliferation-associated protein 1 RNA granule protein 105 GPI-p137 GPI-anchored protein p137 GPI-anchored membrane protein 1 p137GPI RNG105 M11S1 GPIP137 GPIAP1 cell cycle
Names	associated protein 1 CAPRIN1
Accession ID	NP_005889.3; NP_976240.1
Blocking Peptide	EBP12638
Immunogen	Peptide with sequence C-EQRPQKEPIDQ, from the internal region of the protein sequence according to NP_005889.3; NP_976240.1.
Product Comments	This antibody is expected to recognize both reported isoforms (NP_005889.3; NP_976240.1).
Peptide Sequence	C-EQRPQKEPIDQ
Purification Method	Purified from goat serum by ammonium sulphate precipitation followed by antigen affinity chromatography using the immunizing peptide.

Shipping Instructions	Refrigerated
Predicted Species	Human, Rat, Dog, Pig
Reactive Species	Human
Human Gene ID	4076
Rat Gene ID	362173
Product Grade	https://prod-vector-labs-pimcore-assets.s3.us-east-1.amazonaws.com/assets/products/image/elite_medium.png
IHC Results	Paraffin embedded Human Brain (Cortex). Recommended concentration: 5µg/ml.
ELISA	
Detection Limit	Antibody detection limit dilution 1:16000.
Western Blot	Approx 80+140kDa bands observed in lysates of cell line Caco-2, HeLa, Jurkat and K562 (calculated MW of 78.4kDa according to NP_005889.3). The 140kDa band corresponds to the reported p137 (Ellis and Luzio,.PMID: 7657653). Recommended concentration: 0.3-1µg/ml. Primary incubation 1 hoiur at room temperature.
Application Type	Pep-ELISA, WB, IHC

DOCUMENTS

- [Data Sheet](#)

GALLERY IMAGES

