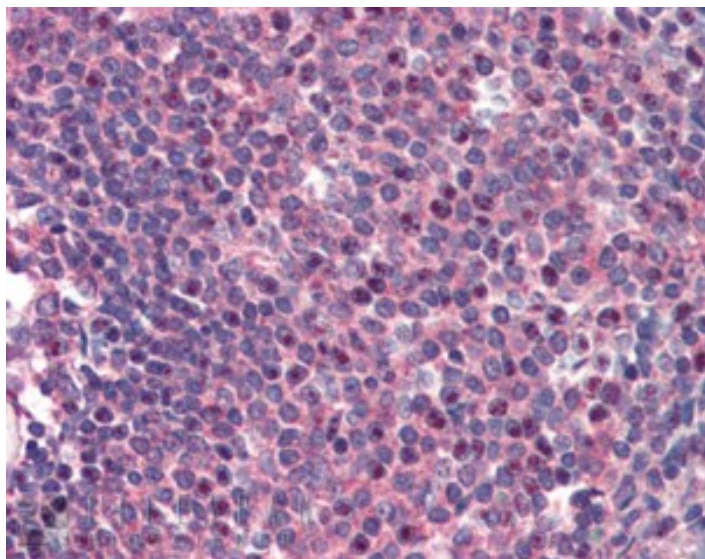


GOAT ANTI-CARD11 ANTIBODY

SKU: EB05886



SPECIFICATIONS

Formulation Supplied at 0.5 mg/ml in Tris saline, 0.02% sodium azide, pH7.3 with 0.5% bovine serum albumin.

Unit Size 100 µg

Storage Instructions Aliquot and store at -20°C. Minimize freezing and thawing.

Synonym / Alias Names bcl10-interacting maguk protein 3|card-maguk protein 1|MGC133069|CARMA1|BIMP3|caspase recruitment domain family, member 11|CARD11

Accession ID NP_115791.3

Blocking Peptide EBP05886

Immunogen Peptide with sequence C-QRKTIVDEEDQL, from the C Terminus of the protein sequence according to NP_115791.3.

Peptide Sequence C-QRKTIVDEEDQL

Purification Method Purified from goat serum by ammonium sulphate precipitation followed by antigen affinity chromatography using the immunizing peptide.

Shipping Instructions Refrigerated

Predicted Species	Human, Mouse, Dog, Cow
Reactive Species	Human
Human Gene ID	84433
Mouse Gene ID	108723
Product Grade	https://prod-vector-labs-pimcore-assets.s3.us-east-1.amazonaws.com/assets/products/image/elite_medium.png
IHC Results	In paraffin embedded Human Spleen shows nuclear staining. Recommended concentration: 2-5µg/ml.
ELISA	
Detection Limit	Antibody detection limit dilution 1:32000.
Western Blot	Approx 150+65kDa bands observed in lysates of cell line Jurkat (calculated MW of 133kDa according to NP_115791.2). Recommended concentration: 1-3µg/ml. An additional band of unknown identity was also consistently observed at 60kDa. This band was successfully blocked by incubation with the immunising peptide.
Application Type	Pep-ELISA, WB, IHC

DOCUMENTS

- [Data Sheet](#)

GALLERY IMAGES

