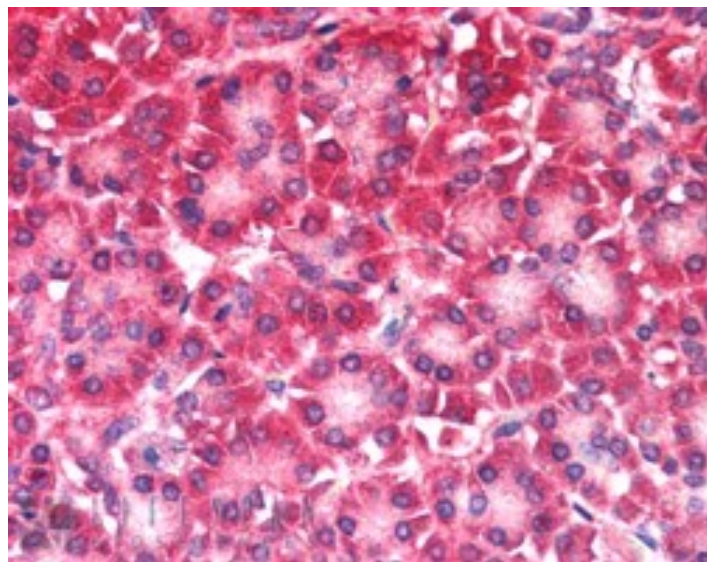


# GOAT ANTI-CARD6 ANTIBODY

**SKU:** EB05922



## SPECIFICATIONS

<b>Formulation</b>	Supplied at 0.5 mg/ml in Tris saline, 0.02% sodium azide, pH7.3 with 0.5% bovine serum albumin.
<b>Unit Size</b>	100 µg
<b>Storage Instructions</b>	Aliquot and store at -20°C. Minimize freezing and thawing.
<b>Synonym / Alias Names</b>	CARD-containing inhibitor of Nod1 and Cardiac-induced NF-kB activation CINCIN1 caspase recruitment domain protein 6 caspase recruitment domain family, member 6 CARD6
<b>Accession ID</b>	NP_115976.2
<b>Blocking Peptide</b>	EBP05922
<b>Immunogen</b>	Peptide with sequence ATESTPSEIERER-C, from the N Terminus of the protein sequence according to NP_115976.2.
<b>Peptide Sequence</b>	ATESTPSEIERER-C
<b>Purification Method</b>	Purified from goat serum by ammonium sulphate precipitation followed by antigen affinity chromatography using the immunizing peptide.
<b>Shipping Instructions</b>	Refrigerated

<b>Predicted Species</b>	Human
<b>Reactive Species</b>	Human
<b>Human Gene ID</b>	84674
<b>Product Grade</b>	<a href="https://prod-vector-labs-pimcore-assets.s3.us-east-1.amazonaws.com/assets/products/image/elite_medium.png">https://prod-vector-labs-pimcore-assets.s3.us-east-1.amazonaws.com/assets/products/image/elite_medium.png</a>
<b>IHC Results</b>	In paraffin embedded Human Pancreas shows variable staining of cytoplasm in acinar cells. Recommended concentration, 5-10µg/ml.
<b>ELISA</b>	
<b>Detection Limit</b>	Antibody detection limit dilution 1:32000.
<b>Western Blot</b>	Approx. 45-50kDa and 25-30kDa bands observed in A549, Human Heart and Human Skeletal Muscle lysates at 1ug of primary. Please note that the bands we observe are different from the predicted size of approx. 119kDa according to NP_115976. Currently we cannot find an explanation for this in the literature. We would appreciate any feedback from people in the field - have any results been reported with other antibodies/lysates? Have any splice variants/modified forms been reported?
<b>Application Type</b>	Pep-ELISA, IHC

## DOCUMENTS

- [Data Sheet](#)

## GALLERY IMAGES

