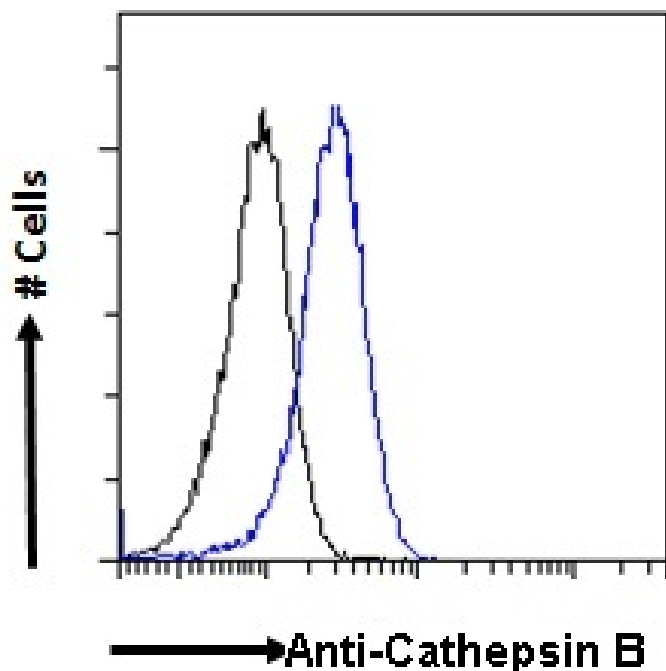


GOAT ANTI-CATHEPSIN B ANTIBODY

SKU: EB06816



SPECIFICATIONS

Formulation	Supplied at 0.5 mg/ml in Tris saline, 0.02% sodium azide, pH7.3 with 0.5% bovine serum albumin.
Unit Size	100 µg
Storage Instructions	Aliquot and store at -20°C. Minimize freezing and thawing.
Synonym / Alias Names	preprocathepsin B cathepsin B1 cysteine protease amyloid precursor protein secretase APP secretase CPSB APPS HGNC:2527 cathepsin B CTSB
Usage Summary	Immunofluorescence: Strong expression of the protein seen in the vesicles of HeLa and USO2 cells. Recommended concentration: 10µg/ml. Flow Cytometry: Flow cytometric analysis of HepG2 cells. Recommended concentration: 10ug/ml.
Accession ID	NP_001899; NP_680090; NP_680091; NP_680092; NP_680093
Blocking Peptide	EBP06816
Immunogen	Peptide with sequence C-DELVNYVNRNT, from the internal region of the protein sequence according to NP_001899; NP_680090; NP_680091; NP_680092; NP_680093.

Product Comments	All five transcript variants encode the same protein (NP_001899; NP_680090; NP_680091; NP_680092; NP_680093).
Peptide Sequence	C-DELVNYVNRNT
Purification Method	Purified from goat serum by ammonium sulphate precipitation followed by antigen affinity chromatography using the immunizing peptide.
Shipping Instructions	Refrigerated
Predicted Species	Human, Mouse, Rat, Dog
Reactive Species	Human
Human Gene ID	1508
Product Grade	https://prod-vector-labs-pimcore-assets.s3.us-east-1.amazonaws.com/assets/products/image/elite_plus_medium.png
IHC Results	Paraffin embedded Human Small Intestine. Recommended concentration: 5µg/ml.
ELISA	
Detection Limit	Antibody detection limit dilution 1:64000.
Application Type	Pep-ELISA, IF, IHC, FC

GALLERY IMAGES

