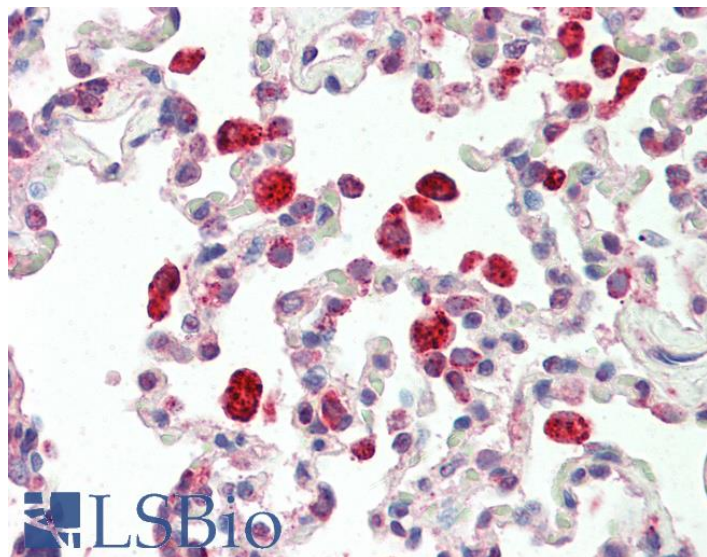


GOAT ANTI-CATHEPSIN C / DPP1 (AA238-252) ANTIBODY

SKU: EB11824



SPECIFICATIONS

Formulation Supplied at 0.5 mg/ml in Tris saline, 0.02% sodium azide, pH7.3 with 0.5% bovine serum albumin.

Unit Size 100 µg

Storage Instructions Aliquot and store at -20°C. Minimize freezing and thawing.

Synonym / Alias Names PLS|PALS|OTTHUMP00000235627|OTTHUMP00000235625|OTTHUMP00000235624|OTTHUMP00000235623|JPDP|JP|HMS|DPP-I|DPPI|DPP1|dipeptidyl-peptidase I|dipeptidyl transferase|dipeptidyl peptidase I|dipeptidyl peptidase 1|CTSC|CPPI|cathepsin J|cathepsin C

Accession ID NP_001805.3

Blocking Peptide EBP11824

Immunogen Peptide with sequence C-RNVHGINFVSPVRNQ, from the internal region of the protein sequence according to NP_001805.3.

Product Comments This antibody is expected to recognize isoform a (NP_001805.3) only.

Peptide Sequence C-RNVHGINFVSPVRNQ

Purification Method Purified from goat serum by ammonium sulphate precipitation followed by antigen affinity chromatography using the immunizing peptide.

Shipping Instructions Refrigerated

Predicted Species Human

Reactive Species Human

Human Gene ID	1075
Product Grade	https://prod-vector-labs-pimcore-assets.s3.us-east-1.amazonaws.com/assets/products/image/elite_medium.png
IHC Results	Paraffin embedded Human Lung and Kidney. Recommended concentration: 5µg/ml.
ELISA Detection Limit	Antibody detection limit dilution 1:128000.
Western Blot	Approx 24kDa band observed in Human Neutrophils lysates (calculated MW of 51.8kDa according to NP_001805.3). This molecular weight is routinely observed by other sources. Recommended concentration: 1-3µg/ml. Primary incubation was 1 hour.
Application Type	Pep-ELISA, WB, IHC

SELECTED REFERENCES

[{"pmid": 29925593, "intro": "**This antibody has been successfully used in Western blot on Human:**", "title":

"Consequences of cathepsin C inactivation for membrane exposure of proteinase 3, the target antigen in autoimmune vasculitis.", "author": "Seren S et al", "journal": "J Biol Chem. 2018 Aug 10;293(32):12415-12428."}, {"pmid": 26884336, "intro": "**This antibody has been**

successfully used in WB on Macaque:", "title": "Neutrophilic cathepsin C is matured by a multi-step proteolytic process and secreted by activated cells during

inflammatory lung diseases.", "author": "Hamon Y et al", "journal": "J Biol Chem. 2016 Feb 16.

pii: jbc.M115.707109"}, {"pmid": 26607765, "intro": "**This antibody has been successfully used in Western blot on Human:**", "title":

"Analysis of urinary cathepsin C for diagnosing Papillon-Lefèvre syndrome.", "author": "Hamon Y et al", "journal": "FEBS J. 2016 Feb;283(3):498-509"}, {"pmid": 0, "intro": "**This antibody has**

been successfully used in Western blot on Human:", "title": "Thérapeutique de la granulomatose avec polyangéite : nouvelle approche par inhibition de la cathepsine C des

cellules CD34+", "author": "N'GUESSAN Koffi, SEREN Seda, DALLET-CHOISY Sandrine, MARCHAND-ADAM Sylvain, DASSE Sery Romualde, KORKMAZ Bric", "journal": "Rev int sc méd Abj -RISM-2019;21,1:32-38."}]

DOCUMENTS

- [Data Sheet](#)

GALLERY IMAGES

