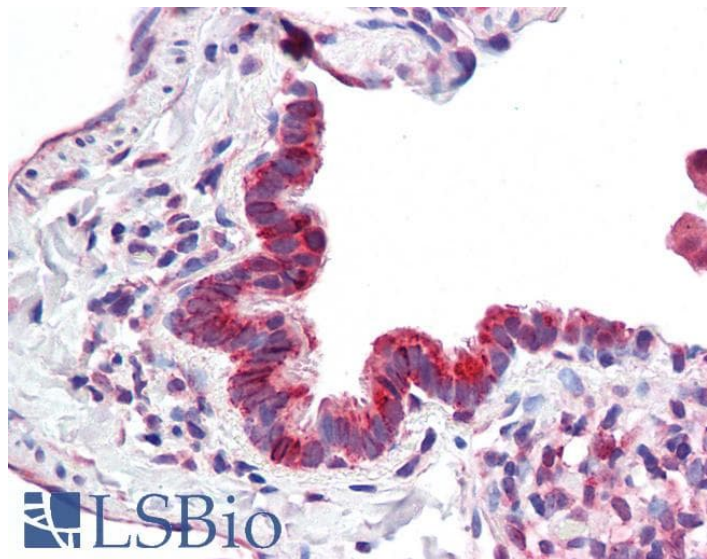


# GOAT ANTI-CBARA1 (AA113-126) ANTIBODY

**SKU:** EB10862



## SPECIFICATIONS

<b>Formulation</b>	Supplied at 0.5 mg/ml in Tris saline, 0.02% sodium azide, pH7.3 with 0.5% bovine serum albumin.
<b>Unit Size</b>	100 µg
<b>Storage Instructions</b>	Aliquot and store at -20°C. Minimize freezing and thawing.
<b>Synonym / Alias Names</b>	calcium-binding atopy-related autoantigen 1  atopy related autoantigen  ara CALC  OTTHUMP00000019787  FLJ12684  EFHA3  DKFZp564C246  CALC  calcium binding atopy-related autoantigen 1 CBARA1
<b>Accession ID</b>	NP_006068.2; NP_001182447.1
<b>Blocking Peptide</b>	EBP10862
<b>Immunogen</b>	Peptide with sequence C-EYENRIRAYSTPDK, from the internal region of the protein sequence according to NP_006068.2; NP_001182447.1.
<b>Product Comments</b>	This antibody is expected to recognize reported isoforms 1 and 2 (NP_006068.2; NP_001182447.1).
<b>Peptide Sequence</b>	C-EYENRIRAYSTPDK
<b>Purification Method</b>	Purified from goat serum by ammonium sulphate precipitation followed by antigen affinity chromatography using the immunizing peptide.

<b>Shipping Instructions</b>	Refrigerated
<b>Predicted Species</b>	Human, Mouse, Rat, Dog, Pig, Cow
<b>Reactive Species</b>	Human
<b>Human Gene ID</b>	10367
<b>Mouse Gene ID</b>	216001
<b>Rat Gene ID</b>	365567
<b>Product Grade</b>	<a href="https://prod-vector-labs-pimcore-assets.s3.us-east-1.amazonaws.com/assets/products/image/elite_medium.png">https://prod-vector-labs-pimcore-assets.s3.us-east-1.amazonaws.com/assets/products/image/elite_medium.png</a>
<b>IHC Results</b>	Paraffin embedded Human Lung. Recommended concentration: 3.75µg/ml.
<b>ELISA</b>	
<b>Detection Limit</b>	Antibody detection limit dilution 1:32000.
<b>Western Blot</b>	Approx 55kDa band observed in lysates of cell line K562 (calculated MW of 54.6kDa according to NP_006068.2). Recommended concentration: 0.5-2µg/ml. An additional band of unknown identity was also consistently observed at 37kDa. This band was successfully blocked by incubation with the immunizing peptide.
<b>Application Type</b>	Pep-ELISA, WB, IHC

## DOCUMENTS

- [Data Sheet](#)

## GALLERY IMAGES

