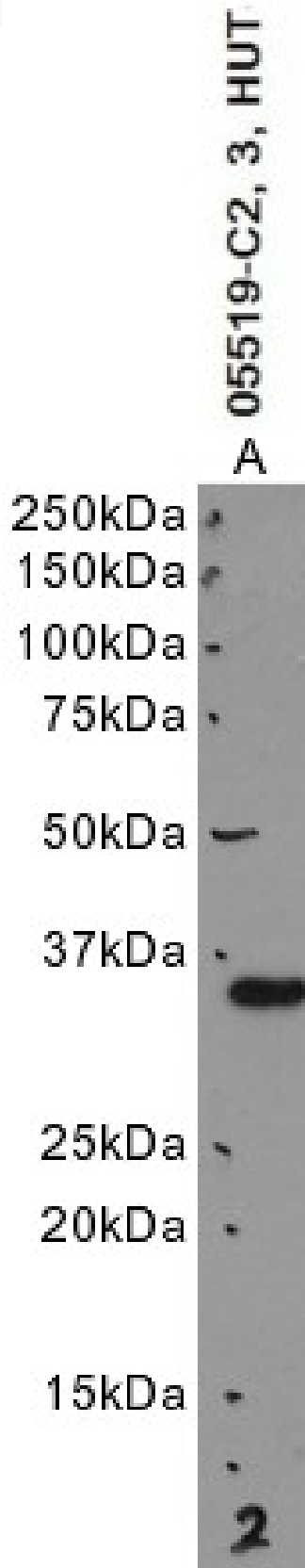


GOAT ANTI-CBR3 ANTIBODY

SKU: EB05519



SPECIFICATIONS

Formulation	Supplied at 0.5 mg/ml in Tris saline, 0.02% sodium azide, pH7.3 with 0.5% bovine serum albumin.
Unit Size	100 µg
Storage Instructions	Aliquot and store at -20°C. Minimize freezing and thawing.
Synonym / Alias Names	short chain dehydrogenase/reductase family 21C, member 2 NADPH-dependent carbonyl reductase 3 hCBR3 SDR21C2 carbonyl reductase (NADPH) 3 carbonyl reductase 3 CBR3
Accession ID	NP_001227.1
Blocking Peptide	EBP05519
Immunogen	Peptide with sequence C-QGQLVHDKVVQNW, from the C Terminus of the protein sequence according to NP_001227.1.
Peptide Sequence	C-QGQLVHDKVVQNW
Purification Method	Purified from goat serum by ammonium sulphate precipitation followed by antigen affinity chromatography using the immunizing peptide.
Shipping Instructions	Refrigerated
Predicted Species	Human
Reactive Species	Human
Human Gene ID	874
Product Grade	https://prod-vector-labs-pimcore-assets.s3.us-east-1.amazonaws.com/assets/products/image/elite_medium.png
ELISA Detection Limit	Antibody detection limit dilution 1:32000.
Western Blot	Approx. 35kDa band observed in Human Uterus lysates and in preliminary testing of Human Testes lysate (calculated MW of 30.9kDa according to NP_001227.1). This molecular weight has been observed by other commercial sources. Recommended concentration: 1-3µg/ml. Primary incubation 1 hour at room temperature.
Application Type	Pep-ELISA, WB

DOCUMENTS

- [Data Sheet](#)

GALLERY IMAGES

