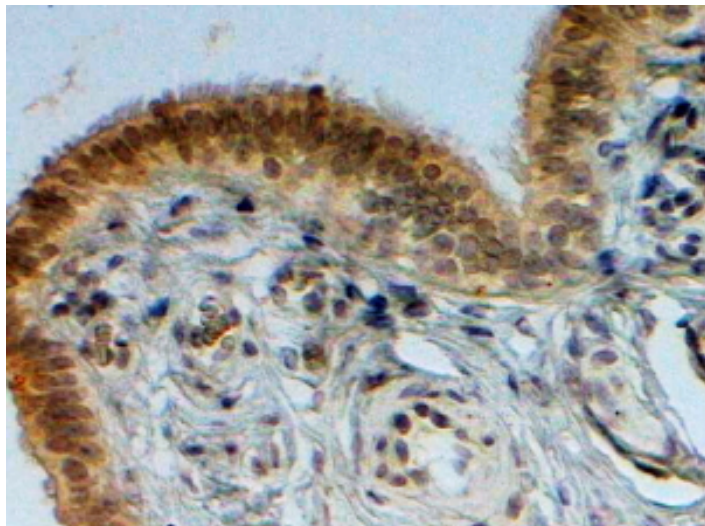


GOAT ANTI-CBX2 ANTIBODY

SKU: EB07432



SPECIFICATIONS

Unit Size	100 µg
Synonym / Alias Names	modifier 3 chromobox homolog 2 (Drosophila Pc class) chromobox homolog 2 cell division cycle associated 6 M33 polycomb-like MGC10561 M33 CDCA6 chromobox homolog 2 (Pc class homolog, Drosophila) CBX2
Accession ID	NP_005180.1; NP_116036.1
Blocking Peptide	EBP07432
Immunogen	Peptide with sequence C-QKKEHEKEVQN, from the internal region of the protein sequence according to NP_005180.1; NP_116036.1.
Product Comments	This antibody is expected to recognise both reported isoforms (NP_005180.1 and NP_116036.1).
Peptide Sequence	C-QKKEHEKEVQN
Shipping Instructions	Refrigerated
Predicted Species	Human, Mouse, Rat, Dog
Reactive Species	Human

Human Gene ID	84733
Mouse Gene ID	12416
Rat Gene ID	303730
Product Grade	https://prod-vector-labs-pimcore-assets.s3.us-east-1.amazonaws.com/assets/products/image/elite_medium.png
IHC Results	In paraffin embedded Human Ovary cancer shows nuclear staining most pronounced in the epithelium. Recommended concentration, 2-4µg/ml.
ELISA	
Detection Limit	Antibody detection limit dilution 1:2000.
Application Type	Pep-ELISA, IHC

DOCUMENTS

- [Data Sheet](#)

GALLERY IMAGES

