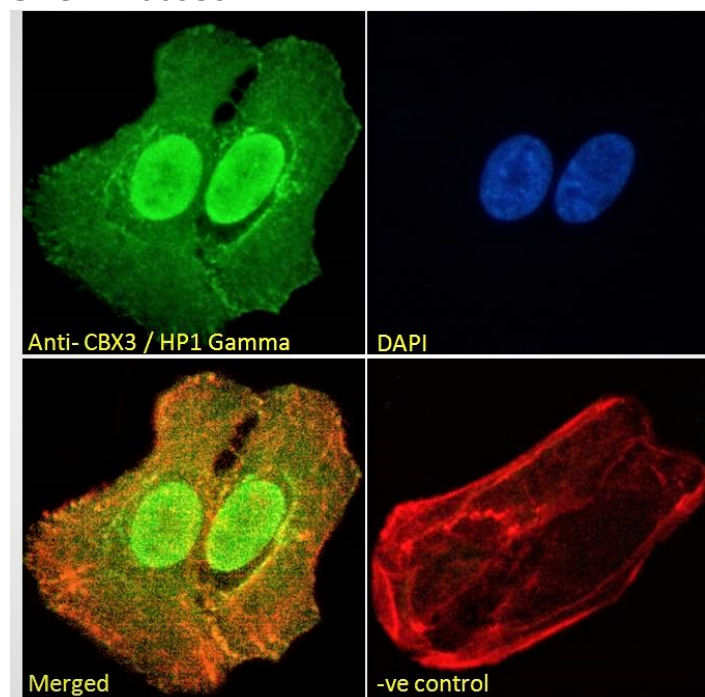


GOAT ANTI-CBX3 / HP1 GAMMA ANTIBODY

SKU: EB06959



SPECIFICATIONS

Formulation Supplied at 0.5 mg/ml in Tris saline, 0.02% sodium azide, pH7.3 with 0.5% bovine serum albumin.

Unit Size 100 µg

Storage Instructions Aliquot and store at -20°C. Minimize freezing and thawing.

Synonym / Alias Names heterochromatin-like protein 1|heterochromatin protein HP1 gamma|chromobox homolog 3 (Drosophila HP1 gamma)|chromobox homolog 3|HP1 gamma homolog|HP1Hs-gamma|HECH|HGNC:1553|chromobox homolog 3 (HP1 gamma homolog, Drosophila)|HP1-GAMMA|CBX3

Usage Summary **Immunofluorescence:** Strong expression of the protein seen in HeLa and U2OS cells. Recommended concentration: 10µg/ml. **Flow Cytometry:** Flow cytometric analysis of HeLa cells. Recommended concentration: 10ug/ml.

Accession ID NP_009207.2

Blocking Peptide EBP06959

Immunogen Peptide with sequence C-EAFLNSQKAGKEKD, from the internal region of the protein sequence according to NP_009207.2.

Product	No cross-reactivity expected with HP1-alpha and HP1-beta. Reported variants represent identical protein:
Comments	NP_009207.2, NP_057671.2
Peptide Sequence	C-EAFLNSQKAGKEKD
Purification Method	Purified from goat serum by ammonium sulphate precipitation followed by antigen affinity chromatography using the immunizing peptide.
Shipping Instructions	Refrigerated
Predicted Species	Human, Mouse, Rat, Cow, Dog
Reactive Species	Human, Mouse
Human Gene ID	11335
Mouse Gene ID	12417
Rat Gene ID	297093
Product Grade	https://prod-vector-labs-pimcore-assets.s3.us-east-1.amazonaws.com/assets/products/image/elite_plus_medium.png
IHC Results	In paraffin embedded Human Placenta shows strong nuclear staining in trophoblasts. Recommended concentration: 2-3µg/ml.
ELISA Detection Limit	Antibody detection limit dilution 1:32000.
Western Blot	Approx. 20kDa band observed in lysates of cell lines A431, HeLa, HepG2, NIH3T3 and NSO (calculated MW of 20.8kDa according to NP_009207.2 and NP_057671.2). Recommended concentration: 0.3-1.0 µg/ml.
Application Type	Pep-ELISA, WB, IHC, IF, FC

SELECTED REFERENCES

[{"pmid": 23545254, "intro": "**This antibody has been successfully used in Western blot on Mouse:**", "title": "Knockdown of HMGA1 inhibits human breast cancer cell growth\r\nand metastasis in immunodeficient mice", "author": "Francescopaolo Di Cello, James Shin, Kirsten Harbom, Cory Brayton", "journal": "Biochem Biophys Res Commun. 2013 Apr 26;434(1):70-4."}]

DOCUMENTS

- [Data Sheet](#)

GALLERY IMAGES

