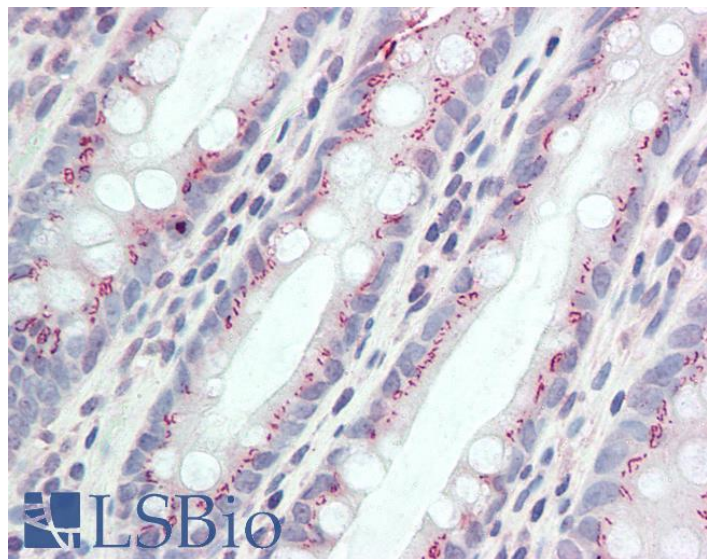


# GOAT ANTI-CCDC3 (AA134-148) ANTIBODY

**SKU:** EB12006



## SPECIFICATIONS

<b>Formulation</b>	Supplied at 0.5 mg/ml in Tris saline, 0.02% sodium azide, pH7.3 with 0.5% bovine serum albumin.
<b>Unit Size</b>	100 µg
<b>Storage Instructions</b>	Aliquot and store at -20°C. Minimize freezing and thawing.
<b>Synonym / Alias Names</b>	favine fat/vessel-derived secretory protein coiled-coil domain-containing protein 3 coiled-coil domain containing 3 CCDC3
<b>Accession ID</b>	NP_113643.1
<b>Blocking Peptide</b>	EBP12006
<b>Immunogen</b>	Peptide with sequence C-PHGVNFQDAIFPDTQ, from the internal region of the protein sequence according to NP_113643.1.
<b>Peptide Sequence</b>	C-PHGVNFQDAIFPDTQ
<b>Purification Method</b>	Purified from goat serum by ammonium sulphate precipitation followed by antigen affinity chromatography using the immunizing peptide.
<b>Shipping Instructions</b>	Refrigerated

<b>Predicted Species</b>	Human, Mouse, Rat, Dog, Pig, Cow
<b>Reactive Species</b>	Human
<b>Human Gene ID</b>	83643
<b>Mouse Gene ID</b>	74186
<b>Rat Gene ID</b>	498795
<b>Product Grade</b>	<a href="https://prod-vector-labs-pimcore-assets.s3.us-east-1.amazonaws.com/assets/products/image/elite_medium.png">https://prod-vector-labs-pimcore-assets.s3.us-east-1.amazonaws.com/assets/products/image/elite_medium.png</a>
<b>IHC Results</b>	Paraffin embedded Human Colon. Recommended concentration: 5µg/ml.
<b>ELISA Detection Limit</b>	Antibody detection limit dilution 1:64000.
<b>Western Blot</b>	In transfected HEK293 transiently expressing Human CCDC3 (DYKDDDDK tagged), a band of approx. 36kDa is observed. No bands are observed in mock-transfected HEK293 and the same band is observed using anti-DYKDDDDK antibody. Recommended concentration: 0.5-1µg/ml.
<b>Application Type</b>	Pep-ELISA, WB, IHC

## DOCUMENTS

- [Data Sheet](#)

## GALLERY IMAGES

