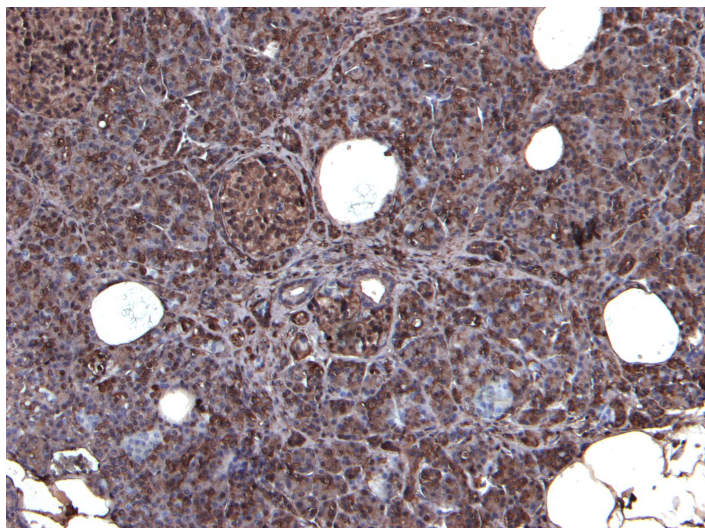


# GOAT ANTI-CCKBR ANTIBODY

**SKU:** EB06767



## SPECIFICATIONS

**Formulation** Supplied at 0.5 mg/ml in Tris saline, 0.02% sodium azide, pH7.3 with 0.5% bovine serum albumin.

**Unit Size** 100 µg

**Storage Instructions** Aliquot and store at -20°C. Minimize freezing and thawing.

**Synonym / Alias Names** CCK2R|gastrin\cholecystikinin brain receptor|gastrin receptor|cholecystikinin-B receptor|gastrin receptor|CCK2 receptor|GASR|CCK-B|HGNC:1571|cholecystikinin B receptor|CCKBR

**Accession ID** NP\_795344.1

**Blocking Peptide** EBP06767

**Immunogen** Peptide with sequence C-FDGSDSDSQSRVRNQ, from the internal region of the protein sequence according to NP\_795344.1.

**Peptide Sequence** C-FDGSDSDSQSRVRNQ

**Purification Method** Purified from goat serum by ammonium sulphate precipitation followed by antigen affinity chromatography using the immunizing peptide.

**Shipping Instructions** Refrigerated

<b>Predicted Species</b>	Human, Mouse, Rat, Cow
<b>Reactive Species</b>	Human, Mouse
<b>Human Gene ID</b>	887
<b>Mouse Gene ID</b>	12426
<b>Rat Gene ID</b>	25706
<b>Product Grade</b>	<a href="https://prod-vector-labs-pimcore-assets.s3.us-east-1.amazonaws.com/assets/products/image/elite_medium.png">https://prod-vector-labs-pimcore-assets.s3.us-east-1.amazonaws.com/assets/products/image/elite_medium.png</a>
<b>IHC Results</b>	Paraffin embedded Human Pancreas. Recommended concentration: 4-6µg/ml.
<b>ELISA</b>	
<b>Detection Limit</b>	Antibody detection limit dilution 1:32000.
<b>Western Blot</b>	Approx 48-50kDa band observed in Mouse Pancreas lysates (calculated MW of 49.2kDa according to Mouse NP_031653.1) Recommended concentration: 0.3-1µg/ml. Primary incubation 1 hour at room temperature.
<b>Application Type</b>	Pep-ELISA, WB, IHC

## SELECTED REFERENCES

[{"pmid": 25122000, "intro": "**This antibody (previous batch) has been successfully used in IF on Rat:**", "title": "Gastrin induces ductal cell dedifferentiation and  $\gamma$ -cell neogenesis after 90% pancreatectomy.", "author": "Téllez N, Montanya E", "journal": "J Endocrinol. 2014 Oct;223(1):67-78"}, {"pmid": 22786615, "intro": "**This antibody (previous batch) has been successfully used in IHC on Human:**", "title": "Promoting role of cholecystokinin 2 receptor (CCK2R) in gastrointestinal stromal tumours pathogenesis.", "author": "Quattrone A, Dewaele B, Wozniak A, Bauters M, Vanspauwen V, Floris G, Schöffski P, Chibon F, Coindre JM, Sciò R, Debiec-Rychter M.", "journal": "J Pathol. 2012 Jul 11. doi: 10.1002/path.4071."}, {"pmid": 20011057, "intro": "**This antibody (previous batch) has been successfully used in Western blot on Rat:**", "title": "Cholecystokinin and Somatostatin Negatively Affect Growth of the Somatostatin-RIN-14B Cells.", "author": "El-Kouhen K, Morisset J.", "journal": "Int J Endocrinol. 2009;2009:875167."}, {"pmid": 19959964, "intro": "**This antibody (previous batch) has been successfully used in ICC/IF in Rat:**", "title": "Control of somatostatin (SS) secretion by CCK-1 and CCK-2 receptors' occupation in RIN-14B cells, a rat pancreatic islet cell line.", "author": "El-Kouhen K, Morisset J.", "journal": "Pancreas. 2010 Mar;39(2):127-34."}, {"pmid": 35430166, "intro": "**This antibody has been successfully used in IF and IHC on Human:**", "title": "Unique membranous gastrin receptor expression of parietal cells and its distribution pattern in the gastric oxyntic mucosa and fundic gland polyps", "author": "Yoko Sato, Shinichi Ban, Yasumi Katayama, Takashi Mitsui", "journal": "Hum Pathol. 2022 Apr 14;S0046-8177(22)00080-6"}, {"pmid": 20843811, "intro": "**This antibody (previous batch) has been successfully used in ICC/IF on Rat:**", "title": "CCK1 and CCK2 receptors are

expressed on pancreatic stellate cells and induce collagen production.", "author": "Berna MJ, Seiz O, Nast JF, Benten D, Bläker M, Koch J, Lohse AW, Pace A.", "journal": "J Biol Chem. 2010 Dec 10;285(50):38905-14."}]

## DOCUMENTS

- [Data Sheet](#)

## GALLERY IMAGES

