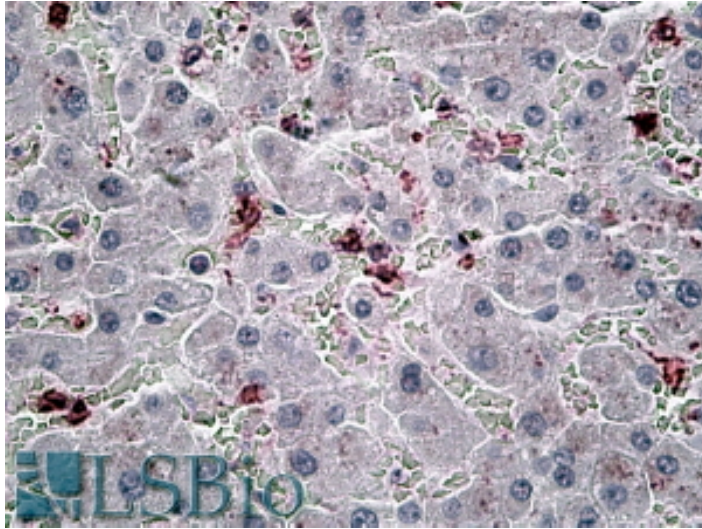


GOAT ANTI-CCL20 ANTIBODY

SKU: EB09667



SPECIFICATIONS

Formulation	Supplied at 0.5 mg/ml in Tris saline, 0.02% sodium azide, pH7.3 with 0.5% bovine serum albumin.
Unit Size	100 µg
Storage	Aliquot and store at -20°C. Minimize freezing and thawing.
Instructions	
Synonym / Alias Names	small inducible cytokine subfamily A (Cys-Cys), member 20 macrophage inflammatory protein 3 alpha exodus-1 ST38 SCYA20 MIP3A MIP-3a LARC CKb4 chemokine (C-C motif) ligand 20 CCL20
Accession ID	NP_004582.1; NP_001123518.1
Blocking Peptide	EBP09667
Immunogen	Peptide with sequence CLGYTDRILHPK, from the internal region of the protein sequence according to NP_004582.1; NP_001123518.1.
Product Comments	This antibody is expected to recognize both isoforms (NP_004582.1; NP_001123518.1).
Peptide Sequence	CLGYTDRILHPK
Purification Method	Purified from goat serum by ammonium sulphate precipitation followed by antigen affinity chromatography using the immunizing peptide.

Shipping Instructions	Refrigerated
Predicted Species	Human, Cow, Pig
Reactive Species	Human
Human Gene ID	6364
Product Grade	https://prod-vector-labs-pimcore-assets.s3.us-east-1.amazonaws.com/assets/products/image/elite_medium.png
IHC Results	In paraffin embedded Human Liver shows local staining between the hepatocytes. Recommended concentration, 6-8µg/ml.
ELISA	
Detection Limit	Antibody detection limit dilution 1:16000.
Western Blot	Preliminary experiments in Human Peripheral Blood Mononucleocytes lysates gave no specific signal but low background (at antibody concentration up to 2µg/ml).
Application Type	Pep-ELISA, IHC

DOCUMENTS

- [Data Sheet](#)

GALLERY IMAGES

