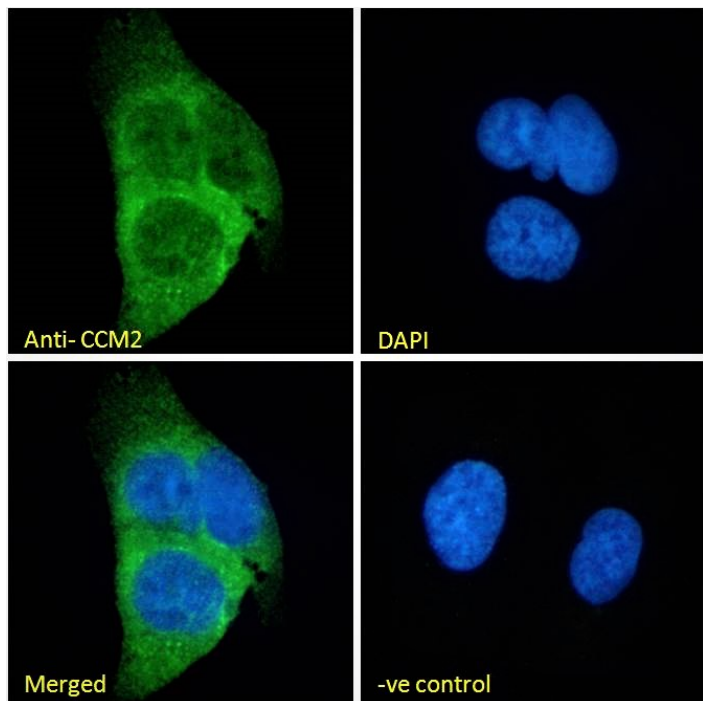


GOAT ANTI-CCM2 ANTIBODY

SKU: EB07499



SPECIFICATIONS

Formulation Supplied at 0.5 mg/ml in Tris saline, 0.02% sodium azide, pH7.3 with 0.5% bovine serum albumin.

Unit Size 100 µg

Storage Instructions Aliquot and store at -20°C. Minimize freezing and thawing.

Synonym /

Alias Names PP10187|MGC74868|MGC4607|MGC4067|C7orf22|cerebral cavernous malformation 2|CCM2

Usage Summary **Immunofluorescence:** Strong expression of the protein seen in the cytoplasm of U2OS cells. Recommended concentration: 10µg/ml. **Flow Cytometry:** Flow cytometric analysis of KNRK cells. Recommended concentration: 10ug/ml.

Accession ID NP_001025006.1; NP_113631.1; NP_001161407.1; NP_001350387.1

Blocking Peptide EBP07499

Immunogen	Peptide with sequence C-KGEKSRDKKAHEK, from the internal region of the protein sequence according to NP_001025006.1; NP_113631.1; NP_001161407.1; NP_001350387.1.
Peptide Sequence	C-KGEKSRDKKAHEK
Purification Method	Purified from goat serum by ammonium sulphate precipitation followed by antigen affinity chromatography using the immunizing peptide.
Shipping Instructions	Refrigerated
Predicted Species	Human, Mouse, Rat, Dog, Cow
Reactive Species	Human, Rat
Human Gene ID	83605
Mouse Gene ID	216527
Product Grade	https://prod-vector-labs-pimcore-assets.s3.us-east-1.amazonaws.com/assets/products/image/elite_plus_medium.png
ELISA Detection Limit	Antibody detection limit dilution 1:128000.
Western Blot	Approx 45-48kDa band observed in Human Heart lysates and approx.48kDa in Human Cerebral Cortex lysates and in lysates of cell line KNRK (calculated MW of 48.8kDa according to Human NP_113631.1 and 49.8kDa according to Rat NP_001119747.1). Recommended concentration: 0.3-2µg/ml. Primary incubation 1 hour at room temperature.
Application Type	Pep-ELISA, WB, IF, FC

DOCUMENTS

- [Data Sheet](#)

GALLERY IMAGES

